

# COMMUNITY HEALTH EMERGENCY MANAGEMENT PROFILE

<b>County or Tribe:</b>	Otero County
<b>Prepared by:</b>	Crystal C. Gillespie
<b>Date:</b>	July 15, 2005
<b>Contact Person:</b>	Lee Ann Loney
<b>Title:</b>	Coordinator
<b>Email Address:</b>	<a href="mailto:oteromch@netmdc.com">oteromch@netmdc.com</a> or <a href="mailto:oterochc@tularosa.net">oterochc@tularosa.net</a>

If you have questions about completing your profile, please call or email:

Joan Murphy, Population Outreach Planning Coordinator  
NMDOH Office of Health Emergency Management  
505-476-7889  
Joan.Murphy@doh.state.nm.us

## Submitting Your Profile

Your completed Community Health Emergency Management Profile is due June 30, 2005. Please submit it electronically to Shaening and Associates, Inc., NMDOH contractors for this project. You may do either or both of the following:

Save your completed profile to a CD and send the CD to:

Shaening and Associates, Inc.  
2319 Old Arroyo Chamiso  
Santa Fe, NM 87505

OR

Email your completed profile as an attached file in Microsoft Word to:

[Maryann@shaening.com](mailto:Maryann@shaening.com)

## Distribution List

This profile has been delivered to the following persons on the following dates:

Name	Agency	Date
Gus Marker, Otero County Emergency Preparedness Coordinator	Otero County Emergency Services	7-15-05
Joe Bailey, President Otero County LEPC	Alamogordo Dept. of Public Safety (DPS)	7-15-05
Jake Meyer, Executive Director	Children In Need of Services (CHINS, fiscal agent of Otero County Community Health Council)	7-15-05
Executive Committee and Members (sent via email to over 80 members) – a draft was sent on 6-28-05	Otero County Community Health Council	7-15-05
Donna Mohr (requested copy)	Independent Counselors Offices	7-15-05
Members	Otero County LEPC	7-15-05

## PART ONE: Psychosocial Vulnerability Assessment

Part One of this profile describes the demographics, socio-economic conditions, family structures, community health characteristics, and community risk and protective factors that would likely contribute to psychosocial vulnerability. This information is provided to assist the community in planning for psychosocial response and recovery in the event of a public health emergency.

Statistics used in this section come primarily from the Otero County Community Health Profile developed by the Otero County Community Health Council, 2005. When available, data from 3 years will be used.

### Demographics

The demographics of this community that would likely contribute to psychosocial vulnerability and thus require unique planning are as follows:

#### Age Distribution

The table below shows the age distribution for Otero County from the years 2000, 2001 and 2002. For these years, the number of individuals age 39 and under decreased while the population age 40 and over increased. This is indicative of a community with a growing senior population thus leading to possible special considerations for the elderly and disabled.

Age Distribution	2000 yr	2001 yr	2002 yr
Under 5	4640	4535	4536
Age 5-19	15,410	15,140	15,088
Age 20-39	17,226	16,386	16,057
Age 40-59	15,028	15,191	15,492
Age 60-79	8635	8738	8854
Age 80+	1379	1469	1550

Source: 2003 Otero County Health Profile, New Mexico Department of Health

#### Race and Ethnicity

The Race and Ethnicity breakdown for Otero County includes: white (53,108 or 86.2%), black (2,608 people or 4.2%), American Indian/Alaska Native (3,795 people or 6.2%), Asian/ Pacific Islander (999 people or 1.6%). 1,067 people, or 1.7% of the population, identified themselves with "two or more races" (Otero County Health Profile, New Mexico Department of Health, 2003).

### **Primary Language**

Over 70% of the population in Otero County 5 years and older speak English only. 23% of those who speak a language other than English are Spanish speaking and “speak English less than very well” (2000 US Census). This data may have significance when those “speaking English less than very well” wish to access services in Otero County. There would be some necessity for agencies to consider bilingual employees or translation services, specifically for our Spanish speaking population. Other languages spoken in Otero County include German, due to the large German population at Holloman Air Force Base. There are nearly 2000 Germans living in Otero County due to the influx of the German Air Force. The community has made some accommodations for these populations in public places by including English, Spanish, and German on signage.

### **Socio-Economic Conditions**

The socio-economic conditions of this community that would likely contribute to psychosocial vulnerability and thus require unique planning are as follows:

#### **Per Capita Personal Income**

In 1999 the personal income wages in Otero County were an average of 16,313 dollars per year. In 2000 the personal income average was 16,748 dollars, an increase of 435 dollars. In 2001 the personal income average increased by 975 dollars totaling 17,724 dollars for the year.

Income in Otero County is, in general, lower than that of New Mexico. This may be due to the types of jobs available and the cost of living here compared to larger urban communities. Though new jobs have come to Otero County in recent years, through call centers, home improvement centers, and restaurants, these are not generally high paying jobs. However, recruitment of new business is continuing, some of which may include the desired higher paying positions.

#### **Household Income**

According to American Fact Finder and the US Census Bureau, the average household income for Otero County is 30,861 dollars a year compared to the United States’ average of 41, 994 dollars per year.

#### **Unemployment Rate**

According to the 2000 US Census, the unemployment rate in Otero County was 5.5% for both 2000 and 2001 but increased to 5.9% for 2002.

#### **Monthly TANF and Food Stamps**

In 2003 monthly TANF enrollment in Otero County was 236 or 0.4% of the population. Enrollment for monthly food stamps was 1,258 or 2%.

### **Medicaid Eligible**

Medicaid enrollment in Otero County for both children and adults in 2000 totaled 7,308 people. Eligible children equaled 5,196 and eligible adults equaled 2,112.

### **Poverty**

In 1997, 17.7% of the population of Otero County was living below the poverty level, while 25.8% of the children under age 18 were living in poverty (Office of New Mexico Vital Records and Health Statistics 2002). In 1999, the population of Otero County living in poverty was 16.3% (percent total population) and 25.3% (children under 18), compared to New Mexico 18.2% and 26.4%, respectively (Office of New Mexico Vital Records and Health Statistics 2003). These differences may not be significant however.

### **Family Composition**

Family composition characteristics of this community that would likely contribute to psychosocial vulnerability and thus require unique planning are as follows:

#### **Distribution of Family Size**

According to the 2000 US Census report, the average household size in Otero County is 2.66 persons, with an average family size of 3.14 persons compared to the United States (2.59 for household size, and 3.14 for average family size).

#### **Grandparents as Caregivers**

According to the US Census Bureau 2000 census, the number of grandparents living in households with one or more grandchildren under 18 years of age in Otero County is 1,368. Of those, 849 grandparents were responsible for the grandchild.

### **Community Health Characteristics**

The community health characteristics of this community that would likely contribute to psychosocial vulnerability and thus require unique planning are as follows:

#### **Birth Rate**

The crude birth rate for Otero County in 2000 was 13.9 where as in 2001 it dropped down to 13.7 and then in 2002 it increased to 14.4 (though these differences are not likely significant). Possible reasons for the changes in birth rate may include the large number of military personnel moving in and out of the city because of permanent change of duty stations, or large number of military personnel who were deployed after the September 11<sup>th</sup> attacks. The return of the deployed military members in 2002 could also have contributed to the 2002 increase.

#### **Mothers under 20**

For 2000, 148 or 17.2 % of the children born were born to mothers under the age of 20 in Otero County. In 2001, 128 or 15.2% of the children were born to teenage mothers and in 2002, 144 or 16.5% of the children were born to mothers under the age of 20.

### **BR of Single Mothers (percentage used instead of rate)**

In Otero County the single mother births have increased between the years 2000 and 2002. In 2000, the number of children born to single mothers was 268 or 31%. The number if children born in 2001 to single mothers was 279 or 33.2 % and in 2002, 318 or 35.9% or children were born to single mothers in Otero County. This indicates an overall increase in births to single mothers. However, this does not necessarily indicate the number of single parent households.

### **Children with Chronic Health Conditions**

According to the NM Dept. of Health Otero Community Health Profile for 2003, in the year 2000 there were 2,585 children registered in the Chronic Conditions Registry in Otero County compared to New Mexico's 90,768 children. Some of these conditions include congenital anomalies, neural tube defects, Down syndrome, cleft lip/cleft palate and asthma.

### **Child Abuse**

For Otero County in the year 2002 there were a total of 389 cases of child abuse. There were a total of 263 investigated cases and 126 substantiated cases. The State of New Mexico, for 2002, had a total of 4,089 substantiated and 10,067 unsubstantiated investigations totaling 14,156 child abuse cases (NM Children, Youth and Families Department, Child Protective Services).

### **Adult Abuse**

For Otero County in the year 2002 there were a total of 170 cases of adult abuse with 42 of them being substantiated and 128 of them being unsubstantiated. In comparison to New Mexico's total of 5044 cases, 1475 substantiated and 3569 unsubstantiated. Otero County, however sits at 75.2% which is higher than the state's 70.8% of unsubstantiated investigations. Otero County does sit slightly lower at 24.7% compared to the state's 29.2 % of substantiated investigations for adult abuse (NM Children, Youth and Families Department Protective Services Division Fact Book, Forth Quarter and Annual 2002).

### **Injury by Mechanism**

For Otero County, through the years of 1999 to 2001 there were a total of 116 deaths by mechanism. The mechanism categories are cut, drown, fall, fire/burn, firearm, motor vehicle, poisoning and other. Among the highest percentages of injury by mechanism included: 21.5% of due to motor vehicles, 15.7 % due to fire arm, 9.7 % due to poisoning and 8.7% due to falls. (Otero County Health Profile 2003 and Otero Community Health Profile March 2005)

### **Motor Vehicle Fatality Rate**

In Otero County for the year 2001, for persons under the age of 19 there were zero fatalities. There were a total of 1,209 crashes with 14 fatal, despite the crash rate that has increased from 1999 to 2001. For 1999 the crash rate was 141, for 2000 it was 169, and for 2001 it was 174.

## **Community Risk and Protective Factors**

Community risk and protective factors in this community that would likely contribute to psychosocial vulnerability and thus require unique planning are as follows:

### **School Achievement and Drop Out Rate**

The high school (9<sup>th</sup>-12<sup>th</sup> grade) drop out rates in Otero County for the 1999-2000 school year was 1.6 compared to New Mexico's 6.0. In 2000-2001 school year Otero County was 1.2 compared to New Mexico's 5.3 and the 2001-2002 school year remained the same as the previous year compared to New Mexico's 3.6. The dropout rate in Otero County is lower than that of New Mexico, and both are decreasing overall.

Though our high school drop out rates are currently very low compared to New Mexico, there is some concern among those working with youth and in education related fields that this rate (1.2) is not reflective of the real situation. According to New Mexico Kids Count 2001 Data Book, the drop out rate for Otero County in the 1990-1991 school year was 7.4, but dropped to 2.0 the following year, probably due to a change in how the rate is calculated. This is a source of some speculation among those who work with youth in Otero County. Some believe that current numbers do not count all youth who actually drop out. (Office of New Mexico Vital Records and Health Statistics 2003)

### **Domestic Violence**

In 1999-2000, Otero County reported 440 Domestic Violence cases per year (Source: COPE, Center of Protective Environment, a local domestic violence shelter, 2004). In FY02, COPE reported that 3,407 total bed nights were provided for 120 persons, with an average length of stay of 28.4 nights. According to the Office of New Mexico Vital Records and Health Statistics 2003, less than one fourth of the 170 investigations of domestic violence in Otero County in 2002, were substantiated. For the same period in Otero County, there were 126 substantiated cases of child abuse (389 total reported).

### **Substance Abuse-alcohol**

In Otero County from the years 1999-2001 the alcohol related death rate is among the lowest out of all counties in New Mexico. Otero County's alcohol related death rate is 53 compared to the state's 56.5, and ranks 19<sup>th</sup> in the state. Otero County ranks 27<sup>th</sup> in the state for alcohol related crashes with a rate of 18.9, where as our neighboring Lincoln County ranks 9<sup>th</sup> with a rate of 33.7. For alcohol involved fatalities, the rate in Otero County is 7.0 compared to the state's 10.8. Finally, Otero County ranks 19<sup>th</sup> in the state for alcohol related crime rates with a rate of 1850. This is less than the state's 2174 alcohol related crime rate and all of Otero's neighboring (bordering) counties exceed the statewide rate except Eddy County (rate of 1742). (From the New Mexico Dept. of Health 2003 Social Indicator Report.)

### **Substance Abuse-Other Drugs**



Otero County lies within the High-Intensity Drug Trafficking Area (HIDTA) for the Southwest border. The Southwest Border HIDTA New Mexico Partnership reports seizures of Mexican marijuana totaling 90,306 Kilos in 2000 and 114, 350 Kilos in 2001.

The New Mexico Dept. of Health 2003 New Mexico Social Indicator Report ranks Otero County 11<sup>th</sup> in the state for alcohol use in the past 30 days, 9<sup>th</sup> for binge drinking in past 30 days, 8<sup>th</sup> for marijuana use in the past 30 days, 9<sup>th</sup> for cocaine use in last 30 days, and 4<sup>th</sup> for inhalant use in past 30 days. This document also ranks Otero County 10<sup>th</sup> for DWI arrest rates, 12<sup>th</sup> for drug related crime, and 11<sup>th</sup> for DWI in past 30 days. (Note: the phrase “past 30 days” refers to the survey questions which asked subjects if they used a specific substance in the past 30 days.)

Otero County is ranked 21<sup>st</sup> in the state for drug related deaths for the years 1999-2001. For drug related hospitalizations through 1999-2001 the rate in Otero County was 220.9 (19<sup>th</sup> in state) compared to the state’s rate of 280.5. The drug only treatment admission rates for Otero County are 5.6 (29<sup>th</sup> in the state) for the years of 1999-2003. In Otero County the rate for drug related crimes was 1671 compared to the state’s 1937. Otero County ranks 12<sup>th</sup> in the state for its drug related crime.

#### **Access to health insurance/medical care**

Otero County is considered a Partial Health Professional Shortage area for Primary Medical Care Professionals, and a Shortage area for Dentists (NM Health Policy Commission). This means that basically, Otero County does not have sufficient health care access to medical and dental services. However, there are options in surrounding cities like El Paso, Las Cruces, and Albuquerque, but access to these resources is also limited due to transportation issues, etc.

#### **Access to child care**

Access to child care is a problem in Otero County. There is a general shortage of child care facilities in the area. In 2002, child care centers in Otero County (including Head Start centers in Alamogordo, Tularosa, La Luz, and Mescalero) served over 900 children. Since then, 2 new centers have opened, and several of the existing centers have opened more slots for infants and toddlers. However, many centers still maintain waiting lists as the availability does not meet demand. There are also many home day care providers (over 75 in 2002) which serve 4-12 children per home. These home day care providers are licensed through the Children Youth and Families Department (CYFD) and monitored by CYFD and Children In Need of Services.

#### **Housing characteristics**

Of the total 23,105 households in Otero County (over half (57%) are represented by married couples, 23% are single person households, 12% of the households are headed by females, and 8% are householders over age 65.

#### **Homelessness**

Otero County has a homeless population, living predominantly in the desert near Alamogordo rather than in the mountains or in the more remote parts of the county (Alamogordo Department of Public Safety, 2004). However, this population is currently not being tracked or documented officially, therefore population numbers, growth, etc. are unknown.

**Crime Rate-adult and juvenile  
(Continued on next page)**

**Crime Rate-adult and juvenile**

The crime rate information provided here is only for Alamogordo, as the information for Otero County as a whole is unavailable. The Otero County Sheriff's office began reporting this year to the Department of Justice Uniform Crime Report, but the Villages of Cloudcroft and Tularosa currently do not. So some additional statistics may become available in the future.

For 2004 the Crime rate in Alamogordo is 288 per 10,000, with a Dept. of Public Safety force of 63 officers. Alamogordo is the second lowest for its crime rate in the state of New Mexico. The tables below show the differences in 2004 crime rates and 2001 crime rates. Information provided by the Alamogordo Department of Public Safety.

Table 1

Table 2

<b>2004 Calls for Service</b>		<b>2004 Major Crimes</b>	
• Police	25,533	Crimes Against Persons	
• Fire	675	• Homicides	1
• EMS Dispatch	4,233	• CSP	7
• Animal Control	3,928 Calls	• Robberies	9
• Total Calls	34,369	• Assaults	454
<b>2004 DPS Response</b>		• Dom. Disturb.	722
• 412.....Felony Arrests		<b>2004 Property Crimes</b>	
• 476 ..... Drug Related Arrests		• Burglaries	128
• 734.....Juvenile Referrals		• Larcenies	732
• 1,623 .....Warrants Served		• Shopliftings	327
• 1,900.....Non-Traffic Citations		• Criminal Damage	727
• 3,964.....Total Arrests		• Vehicle Thefts	31
• \$110,642.....Stolen Property Recovered		• Loss Value	\$502,825
• 18..... Motor Vehicles Recovered			
<b>2001 Crimes Against Persons</b>		<b>2001 Property Crimes</b>	
Homicides	1	Burglaries	110
CSP	11	Larcenies	961
Robberies	7	Shopliftings	486
Assaults	556	Criminal Damage	593
Domestic V.	440	Vehicle Thefts	25
loss Value	\$470,726	loss Value	\$470,726

Table 3

Table 4

2001	Narcotics unit
356	New Cases Handled
344	Felony Arrests
13,074	Pounds of Marijuana Seized
NEU Cash Seizures	\$70,437
NEU Vehicle Seizures	51

**Teen Suicide rate**

According to the Office of NM Vital Records and Health Statistics 2003, from 1998-2002 there were 4 homicides (rate of 16.4) and 3 suicides (rate of 12.3) among youth ages 15-19 in Otero County (rates similar to New Mexico). YRRS data indicated that nearly one

quarter of youth (9<sup>th</sup>-12<sup>th</sup> grade) have seriously considered suicide (22% for 2001 and 17% for 2003), while fewer actually attempted suicide (15% from 2001 and 14% for 2003). Over 25% of students reported carrying weapons in the past 30 days, as well for both years.

### **Adult Suicide Rate**

According to the 2003 New Mexico Social Indicator Report, the adult suicide rate for Otero County for the years 1999 to 2000 was 19.8 just above the state's rate of 18.9.

### **DWI Rate**

For the year 2002 the DWI rate for Otero County was 7.4 compared to New Mexico's 10.1. According to the 2003 NM Social indicator report, Otero County ranks the 10<sup>th</sup> highest for DWI arrests for 1999-2000. According to the officer in charge of the DWI program in Otero County there are about 500-600 offences per year.

## **PART TWO: Populations with Different Planning Needs**

Part Two of this profile describes an estimated number of various sub-populations within the community who may require different planning for responding to and recovering from a health emergency. Individuals and agencies that can serve as liaisons or information conduits are identified.

### **Children**

The planning needs of children need to be addressed by providing services that are age appropriate, culture sensitive and environment friendly. A collaborative effort from families, schools, medical providers, religious organizations and mental health providers will help make the transition in a crisis much smoother. Lisa Patch with Alamogordo Public Schools and Sharon Hodges with New Mexico Department of Health are making plans to develop an Emergency Psychosocial Health Plan for the Alamogordo Public Schools. This plan could possibly be adapted by other school districts. Liaisons for this group would include Adrian Guerrero (APS District Safety Specialist; Veronica Walker of La Vida Institute (for child care centers); Children In Need of Services (for home child care providers) Sandra Connolly (CYFD/Child Care Services Bureau); and the Superintendents of each school district.

### **Elderly**

There are 7,786 people over the age of sixty five in Otero County. There are 3 nursing homes located in Alamogordo: Casa Arena Blanca and Betty Dare Good Samaritan Center and La Francoise. Alamogordo also has one assisted living facility; The Aristocrat. In addition there are four hospice and home health care companies and one respite care center that are available to help assist in those areas as well. The Alamogordo Senior Center Director-Veronica Ortega is the liaison for this population.

### **People with chronic mental illness**

The number of chronic mentally ill in Otero County is unknown. It is estimated that 3-5% of the population suffers from some kind of mental illness. Unfortunately many of those people are not accessing the services that are provided for this population. There are nine counseling/mental health facilities in Otero County. Jim Kerlin is The Counseling Center director and he would be the information conduit for this particular population group.

### **People with substance abuse problems**

Key informants in the area of substance abuse feel that the numbers accessing services in Otero County do not equal the number with substance abuse issues. There are two main substance abuse facilities that assist people with substance abuse problems; The Counseling Center and the Otero County Council on Alcohol. The Counseling Center is currently serving about 165 non residential or outpatient clients. This number indicates those where substance abuse is the primary diagnosis. The Counseling Center primarily works with people who have substance abuse and mental health issues as well (co-occurring disorders). The Council on Alcohol serves about 450 people with substance abuse problems per year. The liaison for this population group is Santiago Rodriguez with the Otero County Council on Alcohol or Jim Kerlin with The Counseling Center.

### **People with cognitive or developmental disabilities or physical disabilities**

Estimated number of people with developmental disabilities living in the Otero County is estimated at 11,083 people compared to the state's 33,776 people. The figure provided is based on 2003 population estimates via census data and the Golley formula (1.8 x # population) to determine estimates of those with disabilities. New Mexico's population has increased by 3.1% since 2000, so the actual number is possibly higher. NM's high rates of poverty, alcohol & substance abuse, pre-term births, lack of prenatal care & high rate of teen pregnancy support an elevated prevalence rate. The information conduit for this population group would be Christina Rutland, Deputy Director of the NM Developmental Disabilities Planning Council.

### **People with Physical Disabilities**

According to the US Census Bureau, 2000 Profile of Selected Social Characteristics the number of non- institutionalized people with cognitive, developmental or physical disabilities in Otero County is 10, 868. There are several support organizations for people who are physically disabled. The NM Division of Vocational Rehabilitation, The Opportunity Center, Disability Resource Center, Alamogordo Cross Disability Coalition are just a few of the types of services available for those who are physically challenged. Eileen Brown with the St. Jude Mission would be liaison for this population group.

### **People who are blind or have visual impairments**

The number of individuals with visual impairments is about .8% of 1% of all people in New Mexico. Alamogordo has two support services for the individuals with visual impairments; The New Mexico School for the Blind and Visually Impaired (serving 64 students in 2001, per the OCCHC Health Profile FY05) and The Commission for the Blind. The placement of these facilities in Alamogordo has naturally increased our county's population of people with visual handicaps. This would be a population needing special assistance in times of crisis. Many of the students at the School for the Blind and Visually Impaired also have developmental

disabilities, adding to their special needs. The contact person or liaison for this population group is Diana Jennings, the superintendent of the New Mexico School for the Blind and Visually Impaired.

### **People who are deaf or have hearing impairments**

The number of people who are deaf or hearing impaired in Otero County is unknown. There are two support and treatment facilities available in Otero County for those with hearing impairments: Advanced Hearing Care and Southwest Hearing Services (maintains a local office but also has offices in Las Cruces and El Paso). Dr. Kelly Frost with Advanced Hearing Care would be the information conduit for this population group.

### **Non-English speaking populations**

There are two major non-English speaking populations in Otero County. The German population brought here by the German Air Force and the Hispanic population, many who have immigrated into Otero County from Mexico. There is a large population of Hispanics that reside in the Chaparral area in particular. The US Census states the population of Chaparral is 6,107, however information from Otero County officials estimates the population size to be closer to 20,000. Many of these people do not speak English and are possibly undocumented. Note: Chaparral is located on the border extending into Otero and Dona Ana Counties and Texas. This causes several jurisdiction problems for this community. The liaison for the German speaking population would be Lieutenant Colonel Michael Beck, Senior Operations Officer for the German Air Force. However, a liaison for the Spanish speaking population has not been identified. At a recent emergency lock down at a local elementary school, it was determined there were not sufficient translators available for the Spanish speaking students and their parents.

### **Undocumented individuals**

The number for undocumented individuals is unknown for Otero County as there is no official organization that is the liaison for this population group.

### **People who are homeless**

The exact number of homeless people in Otero County is unknown. The House of Prayer located in Alamogordo is the only facility in Otero County where homeless people can get a meal and hot shower. The liaison for this community is the House of Prayer director, Gary Myers.

### **Incarcerated and other institutionalized people**

The Otero County Detention Center is located in Alamogordo and is where the majority of people are held. Otero County does house a state prison located near Chaparral as well. In addition, there are 3 residential treatment facilities in Alamogordo, including the James House (32 bed capacity), the Otero County Council on Alcohol Abuse and Alcoholism (27 bed capacity), and La Placita (a 12 bed juvenile facility). The Juvenile Probation and Parole Office (JPPO) is available for youths after they have committed the offense. The JPPO refers the offender to different programs in the community to keep the juvenile from committing an offence. Again those programs are the First Offenders program and Teen Court. Sylvia King with The James House, Santiago Rodriguez with the Otero

County Council on Alcohol would be the liaisons for this population group as well as the administrator at the Detention Center, Virginia Blansett.

### **PART THREE: Psychosocial Response Capacity**

Part Three of this profile describes various strengths, resources, and challenges in the community that may affect psychosocial response capacity.

#### **Leadership and Local Communication**

Gus Marker is the Otero County Emergency Manager however if there was a public health emergency, the first contact would depend on the type of emergency. Many times the calls go through the police dispatch systems and they hear about the crisis/emergency first. Then they call on whoever is closest and needs to be contacted. If a public announcement would need to be made, the mayor or chief of police or fire would step up to coordinate the community. Our hospital is such a key component in our community they would also be there to help support the community in many ways. Communication channels exist in the LEPC emergency plan. The Otero LEOP Flowcharts are provided in Appendix A. Otero County is a small community that sticks together during major crisis/emergency.

#### **Volunteer groups and organizations: Community and Neighborhood Organizations**

There are a total of 273 volunteer groups in Otero County all together and about 120 of them are health volunteer groups that provide services for the community. Groups range from Alcoholics Anonymous, support groups for drug abuse, disabled children, Alzheimer's, visual impairments, cancer, and mental illness. A complete list of the volunteer groups is available on line at The Chamber of Commerce web site <http://www.alamogordo.com/profile/clubs.html>. We also have a total of 95 churches in the community. Refer to this additional website for the complete list and contact information for each organization <http://www.ocedc.com/life/religious/html>.

#### **Experience on Crisis**

Fortunately Otero County and specifically the community of Alamogordo and its surrounding areas have not experienced any major public health emergency, crisis or widespread emergency. In 1957, the city of Alamogordo received 2 inches of rain in 2 hours. This resulted in the construction of ditches to prevent future flooding. A minor public health scare.

There are periodic forest fires, some of which have resulted in property loss and some related loss of life. Major fires in recent years include the Scott Able fire of May 2000 which destroyed homes and property in the Sacramento Mountains near the Communities of Sacramento, Weed, and Timberon. There was also substantial rainfall in the following months which led to severe flooding in the burn areas. Also a plane crashed during the fire fight which led to loss of 3 lives. Also, the Rio Penasco fire of April and May 2002 caused severe damage near Mayhill and though the cause of the fire was determined to be accidental, the man who started the fire committed suicide as a result.

Also, more recently, there was a lockdown of some area schools in March 2005 in Alamogordo due to a standoff between an armed man and the police. The incident ended with no casualties, but evaluation of the incident indicated a lack of Spanish speaking translators.

### **Recent experiences or changes that could affect response and recovery**

Otero County also has been very fortunate in the fact that we have not endured any major changes or experiences that have affected response capacity. The county unfortunately does not have the access to specialty medical care and many people are referred out of the county or state for those services. The community of Alamogordo depends on the Holloman Air Force Base for services to the community as well and for economic reasons. Holloman Air Force Base personnel and their families contribute greatly to the economic base of Otero County, and many civilian residents are employed by Holloman. Many military dependents are employed by local businesses as well. Therefore the community would be greatly affected if the Holloman Air Force Base was to close. It was recently announced (through the Base Realignment and Closure process) that Ft. Bliss, located in El Paso, TX, but lying partially within Otero County, will see an increase in personnel of over 10,000. With Ft. Bliss so close to Otero County, it is possible that some of the increase could be located in Southern Otero County (around Chaparral).

There is a lot of work being done in the area of economic development (see “Overall Strengths” below) in Otero County. With continued success in this effort, the county will continue to grow, both in population and economic activity. This could have an impact, both positive and negative, on the capacity for response and recovery in case of emergency. With growth could come more available resources, but more people could be affected by any single incident. If the growth in population is faster than the development of resources, this could lead to a decreased capacity in time of crisis: more people needing services but fewer services per capita.

### **Overall Strengths**

Otero County is a rural county with largely traditional values. The community is known for helping in times of crisis. Whether it is an individual with cancer needing treatment, an entire community devastated by fire, or the deployment of military personnel to a war zone; this community comes together to provide physical and emotional support.

The county and city leaders have in recent years concentrated much effort on economic development and city improvement. The City of Alamogordo is working on creating miles of walking and biking paths throughout the city. This is in an effort to help improve, not only the aesthetics of Alamogordo, but also to encourage increased walking thus improving public health overall (increased exercise, decreased in air pollution). The Alamogordo Chamber of Commerce and the Otero County Economic Development Council have been very active in recent years, working together on recruiting new businesses to the area, with some substantial success. In the last



several years, new restaurants, home improvement centers, and regional call centers have been recruited to Otero County. These groups are working on many more.

There is also an active effort by many to bring the X Prize (development of commercial space flight) to Otero County. It is taking place in this area next year, but the goal is for the administrative offices to be located in Alamogordo. This would indeed bring much national and international attention to our area.

There seems also (from key informants) to be an increasing sense of community pride. Alamogordo, this year was named to the list of 30 top “All America Cities” by the National Civic League. The team that formed during this process has decided to continue it’s efforts in order to help bring the community together and engage its citizens more in the future.

#### **Areas where we could be better coordinated**

1. There are not many facilities that have a plan in place to respond on the psychosocial aspects of a crisis or disaster. The only plans that exist are through the Local Emergency Planning Committee (LEPC) and the hospital. Most facilities do have general evacuation plans but not a plan for what should be done in the event a public health emergency.
2. In completing this document, it was clear that there was some difficulty in collecting specific information from some sources.
3. There is a lack of mental health and some specialized medical services over all and in case of a crisis, many may not get the services they need. Even without a crisis, many are referred out of town for services.
4. Many of the community agencies and companies have not connected with the LEPC on their emergency plans.
5. As far as emergency planning, the community in general needs to work better together in gathering all the emergency plans and having them in two to three locations with appropriate access.

## **PART FOUR: Emergency Response and Recovery Planning**

Part Four of this profile describes the status of planning for responding to and recovering from a health emergency in our community.

#### **The understanding in the community about potential hazards and vulnerabilities is:**

Overall, Otero County has only a few potential hazards and vulnerabilities within the community, and most of them are minor. We have 3 military installations in Otero County: Holloman Air Force Base, as well as portions of White Sands Missile Range and Ft. Bliss (both of which also lie in Dona Ana County and Texas respectively). With these important installations (including the high security aircraft and missile development programs), Otero County may be at risk for increased terrorist action. It was recently

announced via the Base Realignment and Closure process and Ft. Bliss will gain over 10,000 personnel. This could also be an indication of increased military activity in the area.

Some potential environmental hazards are in the air, soil, or water caused by facilities that produce and release air pollutants, toxicants, waste and water. Thunderstorms and heavy rains contribute to potential weather hazards causing concern for forest fires and flooding in the arroyos. There are also occasional extreme wind conditions that can cause property damage. Our communities are aware of these types of hazards as some can occur, to varying degrees, fairly frequently.

The community may be less aware of other potential hazards that are, though less likely, possible. Our community resisted for some time the development of a truck relief route due to fears of a negative effect on the businesses located along the main street through Alamogordo. However, one aspect that the community leaders were looking at was the possibility of a hazardous spill occurring in the center of town. The relief route, which was completed, will help to alleviate some of this concern. There is also concern in some parts of the county regarding the development of oil fields on the Otero Mesa. It is believed that this could lead to contamination of the water supply. These, and other similar topics, are a source of great community debate.

**The understanding in the community about vulnerable people and populations is:**

Predominately the most vulnerable people in Otero County in the event of a public health emergency are the visually impaired, children, people in the senior population receiving home care assistance, our non-English speaking population, homeless, those with physical disabilities and people with chronic mental illnesses. These populations may have difficulty getting needed information during an emergency, or being able to access services as needed. Though some of these groups have well organized support systems (seniors, those with disabilities) not all who are identified with the population access the support services, so they may not be included in an organized effort during a crisis. Therefore, others (neighbors, family, friends) may need to be identified in order to assist them.

**The county emergency response plan includes:**

A written county plan for Otero County does exist however it is classified so the location and what is exactly in the plan is unavailable to the general public. It is known that the plan does contain a medical and psychosocial response component. With the inception of the Homeland Security and related issues, the classified nature of community emergency plans is understandable.

**Plans for an Emergency Operations Center are:**

Otero County is fortunate in that it has an Emergency Operations Center already in place. However, the location is classified as well as the components of where it would be set up if the current location was destroyed during a disaster. The location and operation of this EOC is still under discussion in the Local Emergency Planning Committee.

**Other emergency response plans include:**

Gerald Champion Regional Medical Center is the only place in Otero County that has a public health emergency response plan. Most of the law enforcement facilities have an emergency plan of some sort. Most of the facilities have general emergency plans but they do not contain a psychosocial response component.

**The extent to which these plans are coordinated is:**

The plans appear to be coordinated through the Local Emergency Planning Committee, the city manager, the county emergency manager and the chiefs of police in Alamogordo, Tularosa, Cloudcroft, and Mescalero.

<b>Name/Title</b>	<b>Agency</b>	<b>Address</b>	<b>Phone/Pager</b>	<b>Email</b>	<b>Notes</b>
Lee Ann Loney- Coordinator	Otero County Community Health Council (OCCHC)	700 E. First Street, Suite 720 Alamogordo, NM 88310	(505) 443-8100 wk	<a href="mailto:oteromch@netmdc.com">oteromch@netmdc.com</a> or <a href="mailto:oterochc@tularosa.net">oterochc@tularosa.net</a>	
Michael Murphy-President	Disability Resource Center	700 E. First Street, Suite 772 Alamogordo, NM 88310	(505) 439-1112 wk	<a href="mailto:mikecil@tularosa.net">mikecil@tularosa.net</a>	
Mark Gentry- Vice President	Cottonwood Christian Fellowship Church/ Cottonwood Prevention Services	7035 Hwy 54/70 North Alamogordo, NM 88310	(505) 437-2701 wk	<a href="mailto:mgency78@hotmail.com">mgentry78@hotmail.com</a>	
Sue Medina-Secretary	Alamogordo Public School Board of Education	37 Stonewood Dr. Alamogordo, NM 88310	(505) 434-3580 wk	<a href="mailto:susan_medina@charter.net">susan_medina@charter.net</a>	
Sharon Hodges- Advisor	NM Dept. of Health/Health Promotions	1207 8 <sup>th</sup> Street Alamogordo, NM 88310	(505) 439-1367 ext 126	<a href="mailto:sharon.hodges@state.nm.us">sharon.hodges@state.nm.us</a>	
Jake Meyer- Fiscal Agent	Executive Director Children In Need of Services (CHINS)	501 24 <sup>th</sup> Street Alamogordo, NM 88330	(505) 434-3011 wk	<a href="mailto:chins@charter.net">chins@charter.net</a>	

\* Other Council Members: The OCCHC has over 85 participating members and 25 voting and ex officio members.

## PART FIVE: Directory of Health Emergency Management Contacts

### Community Health Council Contacts

### Emergency Management Contacts

Contact	Name/Title	Agency	Address	Phone/Pager	Email	N
County Emergency Manager	<b>Gus Marker, Otero County Emergency Preparedness Coordinator</b>	<b>Otero County Emergency Services</b>	<b>1000 New York Ave. Alamogordo, NM 88310</b>	<b>439-2612 or cell 491-5942</b>	<a href="mailto:gmarker@co.otero.nm.us">gmarker@co.otero.nm.us</a>	Us Ba alt
Tribal Emergency Manager	<b>Curtis Williams- Tribal Team Leader</b>	<b>Mescalero Fire Department</b>	<b>PO Box 70 Mescalero, NM 88340</b>	<b>(505) 464-3473</b>	<a href="mailto:apachebonfire@matisp.net">apachebonfire@matisp.net</a>	
LEPC Member	<b>Joe Bailey-President</b>	<b>Alamogordo Dept. of Public Safety (DPS)</b>	<b>619 Texas Ave Alamogordo, NM 88310</b>	<b>439-4119 x11</b>	<a href="mailto:jbailey@ci.alamogordo.nm.us">jbailey@ci.alamogordo.nm.us</a>	
LEPC Member	<b>Wayne Glidden-Vice President</b>	<b>OCFFA/Otero Co.</b>	<b>33 JJ Henry Rd. La Luz, NM 88337</b>	<b>437-5445</b>	<a href="mailto:gliddenw@charter.net">gliddenw@charter.net</a>	
LEPC Member	<b>Mike Riley- Alamogordo Emergency Manager</b>	<b>DPS</b>	<b>700 Virginia Ave Alamogordo, NM 88310</b>	<b>439-0747 or 439-4119 ex12 lm</b>	<a href="mailto:mriley@ci.alamogordo.nm.us">mriley@ci.alamogordo.nm.us</a>	
LEPC Member	<b>Wade King-Treasurer</b>	<b>WSMR EOC</b>	<b>BLD 384 White Sands Missile Range</b>	<b>No phone</b>	<a href="mailto:King1@wsmr.army.mil">King1@wsmr.army.mil</a>	
LEPC Member	<b>Jim O’Leary- District Emergency Co-Cordinator for Amateur Radio</b>	<b>N7DRB- HAM Radio</b>	<b>P.O. Box 73 Alamogordo, NM 88311-0073</b>	<b>(505)443-0776</b>	<a href="mailto:n7drb@totacc.com">n7drb@totacc.com</a>	Yes
LEPC Member	<b>Mark Giuliano</b>	<b>Holloman Fire &amp; Emergency</b>	<b>1081 Fifth St. Holloman AFB 88330</b>	<b>572-7195</b>	<a href="mailto:mark.giuliano@holloman.af.mil">mark.giuliano@holloman.af.mil</a>	

		<b>Emergency</b>	<b>Holloman AFB 88330</b>		<a href="mailto:loman.af.mil">loman.af.mil</a>
Public Health Emerg. Prep'ness	<b>Linda Weiman</b>	<b>Otero County Health Office</b>	<b>1207 8<sup>th</sup> St Alamogordo, NM 88310</b>	<b>(505)437-9340 x 113</b>	<a href="mailto:linda.weiman@state.nm.us">linda.weiman@state.nm.us</a>

**Emergency Management Contacts (cont.)**

<b>Contact</b>	<b>Name/Title</b>	<b>Agency</b>	<b>Address</b>	<b>Phone/Pager</b>	<b>Email</b>	<b>Notes</b>
Hospital Emerg. Manager	<b>Kenneth Gipson-Safety Manager</b>	<b>Gerald Champion Regional Medical Center (GRCMC)</b>	<b>2669 N. Scenic Dr. Alamogordo, NM 88310</b>	<b>(505)443-7549 (505)443-2149</b>	<a href="mailto:kgipson@gcrmc.org">kgipson@gcrmc.org</a>	<b>Yes plan</b>
Hospital Emerg. Manager	<b>John Houston- Trauma Coordinator</b>	<b>GCRMC</b>	<b>2669 N. Scenic Dr. Alamogordo, NM 88310</b>	<b>(505) 443-7934 (505) 443-2118</b>	<a href="mailto:jhouston@gcrmc.org">jhouston@gcrmc.org</a>	<b>Use ER # 443-7900</b>
Hospital Emerg. Manager	<b>Mathew Anderson- CEO or Tom Raffaele- Safety Manager</b>	<b>Mescalero Indian Hospital</b>	<b>P.O. Box 210 Mescalero NM 88340</b>	<b>(505)464-3801</b>	<a href="mailto:manderson@abq.ihs.gov">manderson@abq.ihs.gov</a>	<b>Yes Plan</b>
School Safety Officer	<b>Adrian Guerrero- Alamogordo Public School District Safety Specialist</b>	<b>Alamogordo Public Schools</b>	<b>1211 Hawaii Ave. Alamogordo, NM 88310</b>	<b>(505) 439-3270 ext 104 cell 491- 7233</b>	<a href="mailto:aguerra@aps4kids.org">aguerra@aps4kids.org</a>	
Red Cross	<b>Linda Vigil</b>	<b>American Red Cross</b>	<b>700 E. 1<sup>st</sup> Street Alamogordo, NM 88310</b>	<b>(505)437-4421</b>	<a href="mailto:oteroarc@netmedc.com">oteroarc@netmedc.com</a>	
CERT Program (if any)	<b>Dawn Shainin</b>		<b>137 Cottonwood Canyon Rd. La Luz, NM 88337</b>	<b>(505)443-1531</b>	<a href="mailto:chaplainbjerk@yahoo.com">chaplainbjerk@yahoo.com</a>	
Other health volunteer group	<b>There are 120 volunteer health groups</b>	<b>In Alamogordo and surrounding areas</b>	<b>Refer to <a href="http://www.alamogordo.com/profile/clubs.html">http://www.alamogordo.com/profile/clubs.html</a> for complete contact information</b>			

EMS	<b>Cliff Halls- Operations Manager</b>	<b>American Medical Response</b>	<b>1650 N. White Sands Blvd. Alamogordo, NM 88310</b>	<b>(505)437-9100</b>	<a href="mailto:cliff_halls@amr-ems.com">cliff_halls@amr-ems.com</a>	<b>Has a plan</b>
Law Enforcement	<b>Sam Trujillo- Alamogordo Police Chief</b>	<b>Alamogordo DPS</b>	<b>700 Virginia Ave Alamogordo, NM 88310</b>	<b>(505)439-4300</b>	<b>No email</b>	<b>Has a plan</b>
Law Enforcement	<b>Frank Sacman- Tularosa Police Chief</b>	<b>Tularosa DPS</b>	<b>609 St. Francis Dr Suite B Tularosa, NM 88352</b>	<b>(505)585-2704</b>	<b>No email</b>	<b>Has a plan</b>
Law Enforcement	<b>Gene Green- Cloudcroft Police Chief</b>	<b>Cloudcroft DPS</b>	<b>3208 N. White Sands Alamogordo, NM 88310</b>	<b>(505)682-2101</b>	<b>No email</b>	<b>Operates out of Sheriffs office-Alamo</b>
Law Enforcement	<b>William Mitchell- Police Chief for BIA</b>	<b>Mescalero Law Enforcement</b>	<b>P.O. Box 189 Mescalero, NM 88340</b>	<b>(505)464-4451 or (505) 464-4479</b>	<b>No email</b>	<b>Or Lt. Zachariah Diaz</b>
Law Enforcement	<b>John Blansett</b>	<b>Otero County Sheriff</b>	<b>3208 N. White Sands Alamogordo, NM 88310</b>	<b>(505)437-2210</b>	<b>No email</b>	<b>Has a plan</b>
Law Enforcement	<b>Corey Gossett-Cpt.</b>	<b>NM State Police</b>	<b>411 10<sup>th</sup> St. Alamogordo NM 88310</b>	<b>(505)437-1313</b>	<a href="mailto:cgosset@dps.state.nm.us">cgosset@dps.state.nm.us</a>	<b>Has a plan</b>
Law Enforcement	<b>Lt. Randy Heusser- Operations Officer</b>	<b>Holloman Security Forces</b>	<b>49 SFS 750 1<sup>st</sup> St. Holloman AFB, NM 88330-8032</b>	<b>(505)572 7254</b>	<a href="mailto:randall.heusser@holloman.af.mil">randall.heusser@holloman.af.mil</a>	<b>Or alt. on duty officer</b>
Fire Department	<b>Joe Bailey-Fire Services Commander</b>	<b>Alamogordo Dept. of Public Safety (DPS)</b>	<b>700 Virginia Ave. Alamogordo, NM 88310</b>	<b>(505) 439-4119 opt 3 or ext. 11</b>	<a href="mailto:jbailey@ci.alamogordo.nm.us">jbailey@ci.alamogordo.nm.us</a>	<b>Yes</b>
Fire Department	<b>Robert Chavez- Fire Chief</b>	<b>Tularosa Fire Department</b>	<b>705 St. Francis Dr. Tularosa, NM 88352</b>	<b>(505)585-2704</b>	<a href="mailto:rchavez@tularosa.net">rchavez@tularosa.net</a>	<b>Emerg. Plan</b>
Fire Department	<b>Erich Wuersching-Fire Chief</b>	<b>Cloudcroft Fire Department</b>	<b>PO Box 317 Cloudcroft, NM 88317</b>	<b>682-3490 wk 682-3375 hm</b>	<a href="mailto:shiverpinesrv@totacc.com">shiverpinesrv@totacc.com</a>	<b>Yes</b>

Fire Department	<b>Curtis Williams-Tribal Emergency Management Team Leader</b>	<b>Mescalero Fire Department</b>	<b>PO Box 70 Mescalero, NM 88340</b>	<b>(505) 464-3473</b>	<a href="mailto:apachebonfire@matisp.net">apachebonfire@matisp.net</a>	<b>Yes Plan</b>
Fire Department	<b>Gary Atwell- Chief</b>	<b>Alamo West Fire/Rescue</b>	<b>23 El Paso Alamogordo, NM 88310</b>	<b>(505) 572-5074</b>	<a href="mailto:gary.atwell@holloman.af.mil">gary.atwell@holloman.af.mil</a>	<b>Plan in place</b>
Fire Department	<b>Mark Giuliano- Fire Chief</b>	<b>Holloman Fire and Emergency Services</b>	<b>1081 5<sup>th</sup> St. Alamogordo, NM 88310</b>	<b>(505)572-7195</b>	<a href="mailto:mark.giuliano@holloman.af.mil">mark.giuliano@holloman.af.mil</a>	<b>Plan in place</b>
Search & Rescue	<b>Leroy Lewis-Director</b>	<b>Alamogordo Search/ Rescue</b>	<b>No address provided</b>	<b>(505) 437-1313  430-2987</b>	<b>No email provided use cell phone</b>	<b>will provide services upon police request</b>
Search & Rescue	<b>Matt Corp- Director</b>	<b>Sacramento Search/ Rescue</b>	<b>P.O. Box 444 Cloudcroft, NM 88317</b>	<b>(505)430-3365</b>	<a href="mailto:corpmmattew@hotmail.com">corpmmattew@hotmail.com</a>	<b>Will provide services upon police request</b>
CISM	<b>Diane Dorsey- CISM Coordinator</b>	<b>CISM</b>	<b>No physical address provided</b>	<b>(505) 827-1929</b>	<a href="mailto:Dorsey.Diane@state.nm.us">Dorsey.Diane@state.nm.us</a>	<b>unknown</b>

### Health Care Provider Contacts

<b>Contact</b>	<b>Name/Title</b>	<b>Agency</b>	<b>Address</b>	<b>Phone/Pager</b>	<b>Email</b>	<b>Notes</b>
Hospital	<b>Carl Mantey-CEO</b>	<b>GCRMC</b>	<b>2669 N. Scenic Alamogordo, NM 88310</b>	<b>(505) 439-6100 (505) 443-7845</b>	<b>No email</b>	<b>Or on duty administrator</b>
Hospital	<b>Mathew Anderson- CEO</b>	<b>Mescalero Indian Hospital</b>	<b>P.O. Box 210 Mescalero, NM 88340</b>	<b>(505)464-3801</b>	<a href="mailto:manderson@abq.ihs.gov">manderson@abq.ihs.gov</a>	<b>Yes Plan</b>



Public Health Office	<b>Linda Weiman – Nurse Manager</b>	<b>Otero County Public Health Office</b>	<b>1207 8<sup>th</sup> St. Alamogordo, NM 88310</b>	<b>437-9340 437-9899 437-9093</b>	<a href="mailto:linda.weiman@state.nm.us">linda.weiman@state.nm.us</a>	<b>Office emergency protocols</b>
Primary/Ambul. Care Clinic	<b>Cindy Curry-Safety Officer or Andrea Ocasio</b>	<b>Ben Archer Health Center</b>	<b>1501 E. 10<sup>th</sup> St. Alamogordo, NM 88310</b>	<b>443-8133</b>	<a href="mailto:Cindycurry880@msn.com">Cindycurry880@msn.com</a> or <a href="mailto:aocasio@bahc.nm.org">aocasio@bahc.nm.org</a>	<b>Yes plan</b>
Primary/Ambul. Care Clinic	<b>Leoma Baca-Director</b>	<b>Mescalero Wellness Center</b>	<b>476 Mescal Loop Mescalero, NM 88340</b>	<b>(505) 464-6383</b>	<a href="mailto:rezhlth@matisp.net">rezhlth@matisp.net</a>	<b>Yes plan</b>
Primary/Ambul. Care Clinic	<b>Julie Baker-Administrator</b>	<b>Sacramento Mountain Medical Center (Presbyterian Medical Services)</b>	<b>102 HWY 82 Cloudcroft, NM 88317</b>	<b>(505)682-2542</b>	<b>No email</b>	<b>Yes Plan</b>
Primary/Ambul. Care Clinic	<b>Julie Baker-Administrator</b>	<b>Tularosa Clinic (Presbyterian Medical Services)</b>	<b>111 Center Ave Tularosa, NM 88352</b>	<b>(505) 585-1250</b>	<b>No email</b>	<b>Yes Plan</b>
Primary/Ambul. Care Clinic	<b>Stella Avila- Office Manager</b>	<b>Alamogordo Clinic Immediate Care Cntr.</b>	<b>1410 Aspen Alamogordo, NM 88310</b>	<b>(505) 434-5571</b>	<b>No email</b>	<b>No plan</b>
Other (e.g. Long Term, Home Health, etc.)	<b>Rich Cartney-Administrator</b>	<b>Betty Dare Good Samaritan Center</b>	<b>3101 N. Florida Alamogordo, NM 88310</b>	<b>(505)434-0033</b>	<a href="mailto:rcartney@good-sam.com">rcartney@good-sam.com</a>	<b>Has plan</b>
Other (e.g. Long Term, Home Health etc.)	<b>Sally Manning- Director of Nursing</b>	<b>Casa Arena Blanca</b>	<b>205 Moonglow Alamogordo, NM 88310</b>	<b>(505) 434-4510</b>	<b>No email</b>	<b>Unknown</b>

Other (e.g. Long Term, Home Health, etc.)	<b>Beverly Evens- Executive Director</b>	<b>Aristocrat Assisted Living Community</b>	<b>252 Robert Bradley Alamogordo, NM 88310</b>	<b>(505) 437-3002</b>	<b>No email</b>	<b>Has plan</b>
Other (e.g. Long Term, Home Health, etc.)	<b>Frances Walker- Administrator</b>	<b>La Francoise</b>	<b>1504 Roosevelt Av. Alamogordo, NM 88310</b>	<b>(505) 437-4302</b>	<b>No email</b>	<b>Has evac.plan</b>
Home Health	<b>Brenda O’Conner- Administrator</b>	<b>Access Home Health Care</b>	<b>1600 Indian Wells Alamogordo, NM 88310</b>	<b>(505)434-6222 (505)439-7228 cell</b>	<b>No email</b>	<b>No plan</b>
Home Health	<b>Pat Raub- Administrator</b>	<b>Alamogordo Home Care/Hospice</b>	<b>505 11 Street Alamogordo, NM 88310</b>	<b>437-3500</b>	<b><a href="mailto:ahc@wayfarer1.com">ahc@wayfarer1.com</a></b>	<b>Patient emerg. plan</b>
Home Health	<b>Karen Huffman</b>	<b>Coordinated Care Corp</b>	<b>920 E. 10th St. Alamogordo, NM 88310</b>	<b>434-5744</b>	<b>No email</b>	<b>No Plan – reach her 8-5</b>
Home Health	<b>Gwen McCourt- Manager</b>	<b>Mountain Shadows Home Care Services</b>	<b>252 Robert Bradley Dr Alamogordo, NM 88310</b>	<b>437-3794</b>	<b>Mtshadows2@hotmail.com</b>	<b>No Plan</b>
Other: Respite care for Dev. Challenged	<b>Meron Wilson- Director</b>	<b>Opportunity Center</b>	<b>873 Wright Alamogordo, NM 88310</b>	<b>(505) 437-0919</b>	<b><a href="mailto:meronave@tularosa.net">meronave@tularosa.net</a></b>	<b>No Plan</b>
Behavioral Health Provider	<b>Jim Kerlin-Director</b>	<b>The Counseling Center</b>	<b>1900 E. 10<sup>th</sup> Street Alamogordo, NM 88310</b>	<b>(505) 437-7404</b>	<b><a href="mailto:jkerlin@charter.net">jkerlin@charter.net</a></b>	<b>No plan</b>
Behavioral Health Provider	<b>Lance Spear- Owner</b>	<b>The Safety Institute</b>	<b>1518 Indian Wells Alamogordo, NM 88310</b>	<b>434-4356</b>	<b>No email</b>	<b>No plan</b>
Behavioral Health Provider	<b>Santiago Rodriquez- Director</b>	<b>Otero County Council on Alcohol Abuse and Alcoholism</b>	<b>P.O. Box 1561 Alamogordo, NM 88310</b>	<b>437-8942</b>	<b><a href="mailto:Santiagor_2@charter.net">Santiagor_2@charter.net</a></b>	<b>No Plan</b>
Behavioral Health Provider	<b>Vicki Thomas PhD.- Owner or Liz Logan- Office Manager</b>	<b>Alamogordo Mental Health Services</b>	<b>1208 N. York Ave. Alamogordo, NM 88310</b>	<b>437-8865</b>	<b>alamogordomental@tularosa.net</b>	<b>No Plan use</b>

	<b>Office Manager</b>				<b>@tularosa.net</b>	
Behavioral Health Provider	<b>No contact provided</b>	<b>Alcohol, Drug, and Mental Health Counseling Services</b>	<b>No physical address provided</b>	<b>1(800)996-3784</b>	<b>No email</b>	<b>unknown</b>
Behavioral Health Provider	<b>Sheryl (Candy) Schoeneberg- Counselor</b>	<b>Bethel Baptist Counseling</b>	<b>1316 Scenic Dr. Alamogordo, NM 88310</b>	<b>437-7311</b>	<b><a href="mailto:candy@bethelnm.org">candy@bethelnm.org</a></b>	<b>unknown</b>
Behavior Health Provider	<b>Sylvia King- Director</b>	<b>Community Addiction Treatment Services (CATS) and James House</b>	<b>303 B Canal Alamogordo, NM88310</b>	<b>434-2016</b>	<b><a href="mailto:tuliegal@tularosa.net">tuliegal@tularosa.net</a></b>	<b>No Plan</b>
Behavioral Health Provider	<b>Jake Meyer- Director</b>	<b>Children In Need of Services (CHINS)</b>	<b>501 24<sup>th</sup> Street Alamogordo, NM 88310</b>	<b>434-3011</b>	<b><a href="mailto:Chins@charter.net">Chins@charter.net</a></b>	
Behavioral Health Provider	<b>Eileen Macmillan</b>	<b>National Alliance for the Mentally Ill (NAMI)-Otero</b>	<b>1318 Desert Eve Alamogordo, NM 88310</b>	<b>442-1028</b>	<b><a href="mailto:emacmillan@tularosa.net">emacmillan@tularosa.net</a></b>	
Behavioral Health Provider	<b>Donna Mohr- Independent Counselors</b>	<b>Independent Counselors Offices</b>	<b>PO Box 406 Alamogordo, NM 88310</b>	<b>(505)439-8288</b>	<b>No email</b>	<b>No Plan please send copy of profile</b>
Behavioral Health Provider	<b>Marc A. Caplan PhD, PA, Assoc.</b>	<b>Independent Counselor</b>	<b>916 N. White Sands Rd. Alamogordo, NM 88310</b>	<b>(505)434-5512</b>	<b>No email</b>	<b>No plan</b>
Behavior Health Provider	<b>Robin Bailey- Office Manager</b>	<b>White Sands Mental Health</b>	<b>1402 Indian Wells Rd. Alamogordo, NM 88310</b>	<b>(505)434-9764</b>	<b><a href="mailto:Robinbailey675@hotmail.com">Robinbailey675@hotmail.com</a></b>	<b>Yes Plan</b>
Behavioral Health Provider-other	<b>Carolyn Lee- JPO Chief</b>	<b>Juvenile Probation and Parole Office (JPPO)</b>	<b>211 E. 10<sup>th</sup> St. Alamogordo, NM 88310</b>	<b>(505) 437-0420</b>	<b>No email</b>	<b>No plan</b>

Behavioral Health Provider-other	<b>James Peck</b>	<b>La Placita</b>	<b>3102 N Florida Alamogordo, NM 88310</b>	<b>(505)434-0515</b>	<b>No email</b>	<b>Yes has a plan</b>
----------------------------------	-------------------	-------------------	--	----------------------	-----------------	-----------------------

**Health Care Provider Contacts (cont.)**

<b>Contact</b>	<b>Name/Title</b>	<b>Agency</b>	<b>Address</b>	<b>Phone/Pager</b>	<b>Email</b>	<b>Notes</b>
Behavioral Health Provider	<b>Andrea Ocasio- Office Manager</b>	<b>Ben Archer Health Center</b>	<b>1501 E. 10<sup>th</sup> St. Alamogordo, NM 88310</b>	<b>443-8133</b>	<a href="mailto:aocasio@bahcnm.org"><u>aocasio@bahcnm.org</u></a>	<b>Yes plan</b>
Behavioral Health Provider	<b>Julie Baker- Administrator</b>	<b>PMS-Presbyterian Medical Services</b>	<b>74 James Canyon Hwy Cloudcroft NM 88317 or 111 Main Street Tularosa NM 88325</b>	<b>682-2542 or 585-1250</b>	<b>No email</b>	<b>Emergency plan</b>
Pharmacy	<b>Debbie Blount-Manager</b>	<b>Wal-Mart Pharmacy</b>	<b>233 S. New York Ave. Alamogordo, NM 88310</b>	<b>(505)434-5345 opt. 0</b>	<a href="mailto:rphdebbie@yahoo.com"><u>rphdebbie@yahoo.com</u></a>	<b>yes</b>
Pharmacy	<b>Thomas Norris-Manager</b>	<b>K-Mart Pharmacy</b>	<b>3201 N. White Sands Alamogordo, NM 88310</b>	<b>434-2744</b>	<b>No email</b>	<b>No plan</b>
Pharmacy	<b>David Flores- Manager</b>	<b>Walgreen's Pharmacy</b>	<b>895 N. White Sands Alamogordo, NM 88310</b>	<b>(505)434-4116 opt. 0</b>	<b>No email</b>	<b>Remote prescription</b>
Pharmacy	<b>Gail Watters- Manager</b>	<b>Lowe's Pharmacy</b>	<b>675 E. 10<sup>th</sup> Street Alamogordo, NM 88310</b>	<b>(505)434-4130</b>	<a href="mailto:Rx55@lowesmarket.com"><u>Rx55@lowesmarket.com</u></a>	<b>No plan</b>
Pharmacy	<b>Hall Sims- Owner</b>	<b>Medical Arts</b>	<b>1301 E. 10<sup>th</sup> Street Alamogordo, NM 88310</b>	<b>(505) 437-5530</b>	<a href="mailto:hall@totacc.com"><u>hall@totacc.com</u></a>	<b>No plan carries extra Rx</b>

Mortuary	<b>Kent and Lisa House - Owners</b>	<b>Alamogordo Funeral Home</b>	<b>2301 1<sup>st</sup> Street Alamogordo, NM 88310</b>	<b>434-5253</b>	<b>No email</b>	<b>No plan</b>
Mortuary	<b>Harold O'Dell- Director</b>	<b>Hamilton-O'Dell Funeral Home</b>	<b>1334 N. Scenic Dr. Alamogordo, NM 88310</b>	<b>(505)437-0530</b>	<b>No email</b>	<b>No plan</b>
Other	<b>No contact person</b>	<b>Professional Crematory Services</b>	<b>No address provided</b>	<b>(505)437-3002</b>	<b>No email</b>	<b>No plan</b>
Other	<b>No contact person</b>	<b>Sunset Gardens Direct Depository</b>	<b>No address provided</b>	<b>(505)437-9909</b>	<b>No email</b>	<b>No plan</b>
Other	<b>Yvette Guilez-Manager</b>	<b>Lincare</b>	<b>804 E. 10<sup>th</sup> Alamogordo, NM 88310</b>	<b>(505)437-6155</b>	<b>No email</b>	<b>No plan</b>
Other	<b>Doug Thomas- Manager</b>	<b>American Home Patient</b>	<b>1001 E. 10<sup>th</sup> Street Alamogordo, NM 88310</b>	<b>(505)434-3778</b>	<b>No email</b>	<b>No plan</b>
Other	<b>Marie -Manager</b>	<b>Major Medical</b>	<b>700 Fairgrounds Rd Alamogordo, NM 88310</b>	<b>(505)434-0207</b>	<b>No email</b>	<b>No Plan</b>
Other	<b>Naomi - Manager</b>	<b>Wheelchair and Walker Rentals</b>	<b>1701 Indian Wells Alamogordo, NM 88310</b>	<b>(505)434-0207</b>	<b>No email</b>	<b>No plan</b>

### Community Contacts

<b>Contact</b>	<b>Name/Title</b>	<b>Agency</b>	<b>Address</b>	<b>Phone/Pager</b>	<b>Email</b>	<b>Notes</b>
Local Gov't: Pub. Utility/Works	<b>Mary Parra- Public Information Coordinator</b>	<b>Texas-New Mexico Power Company</b>	<b>901 N. Florida Alamogordo, NM 88310</b>	<b>437-2423</b>	<a href="mailto:mparra@tnpe.com">mparra@tnpe.com</a>	<b>Yes Plan</b>
Local Gov't: Pub. Utility/ Works	<b>Specific information not available.</b>	<b>PNM Gas</b>	<b>1108 Cuba Ave. Alamogordo, NM 88310</b>	<b>950-1997</b>		

Local Gov't: Pub. Utility/Works	<b>Not available</b>	<b>Otero County Electric Cooperative</b>	<b>202 Burro Ave. Cloudcroft, NM 88325</b>	<b>1-800-548- 4660 or 682- 2521</b>		
Local Gov't: Human Services	<b>Rebecca Schuyler-Avila County Director</b>	<b>NM Human Services Dept./ Income Support Division</b>	<b>108 Cottonwood Dr. Alamogordo NM 88310 408 Cuba Avenue (home) Alamogordo, NM 88310</b>	<b>437-9260  437-8258 (hm)</b>	<a href="mailto:Rebecca.Schuyler-Avila@state.nm.us">Rebecca.Schuyler-Avila@state.nm.us</a>	
Faith Community	<b>Robert Smith</b>	<b>Minstrel Alliance/ Cottonwood Christian Fellowship</b>	<b>PO Box 1570 Alamogordo, NM 88310</b>	<b>437-2762</b>		<b>No plan</b>
Faith Community	<b>Eileen Brown- Coordinator Outreach</b>	<b>St. Jude Mission</b>	<b>1404 College Ave Alamogordo, NM 88310</b>	<b>437-0238</b>	<a href="mailto:sjalamo@zianet.com">sjalamo@zianet.com</a>	<b>Help with shelter and some food</b>
Faith Community	<b>Gary Myers, Director</b>	<b>House of Prayer</b>	<b>601 Delaware Ave. Alamogordo, NM 88310</b>	<b>437-7880</b>		<b>Work with homeless</b>
Food Bank	<b>Capt. Ron McKay- Officer in Charge</b>	<b>Salvation Army- Emergency Disaster Services</b>	<b>1900 1<sup>st</sup> Street Alamogordo, NM 88310</b>	<b>443-0845 (520) 850- 7988</b>	<a href="mailto:dumfries@zianet.com">dumfries@zianet.com</a>	<b>Food pantry M-F 10am - 12 pm</b>
Food Bank	<b>Mary McAdams- Secretary</b>	<b>Alamogordo Church of Christ</b>	<b>2826 Indian Wells Rd. Alamogordo, NM 88310</b>	<b>443-0497</b>	<a href="mailto:alamogordochurch@zianet.com">alamogordochurch@zianet.com</a>	<b>Food Pantry Wed 1-3pm</b>
Food Bank	<b>No contact person</b>	<b>Wesley United Methodist Church</b>	<b>101 Dale Scott Ave Alamogordo, NM 88310</b>	<b>437-5054</b>	<b>No email</b>	<b>Mon 9-12 food pantry</b>
Food Bank	<b>No contact person</b>	<b>Primera Iglesia Bautista</b>	<b>1711 Ocotillo Dr. Alamogordo, NM 88310</b>	<b>434-8650</b>	<b>No email</b>	<b>Food Pantry Wed. 1-3pm</b>
Food Bank	<b>Patty Johnston- Secretary</b>	<b>First Assembly</b>	<b>801 10<sup>th</sup> St. (10<sup>th</sup> and Florida) Alamogordo, NM 88310</b>	<b>437-8922</b>	<a href="mailto:pjohnston@neworship.org">pjohnston@neworship.org</a>	<b>Food Pantry Mon 9-12pm</b>

Food Bank	No contact person	Tularosa United Methodist Church	1007 Granado Tularosa NM 88352	585-2314	No email	Food Pantry Mon/Wed 10-12
Food Bank	Maria House-Secretary Al Maxi- Minister Loise Lindley-Food Pantry Staff	Church of Christ	1300 Cuba Ave Alamogordo, NM 88310	437-4795	<a href="mailto:cubacoc@wayfarer1.com">cubacoc@wayfarer1.com</a>	Free Lunch Sat. 11:30-1
Food Bank	Jean Shaffer-Share Table committee chair	Grace United Methodist Church	16 <sup>th</sup> St and Cuba 1206 Greenwood Ln. Alamogordo, NM 88310	437-7640	No email-updating information	Shared Table Sat. 11:30-1 * no plan
Food Bank	Genie Wade-Volunteer Head of Community Kitchen	St. Johns Episcopal Church	1114 Indiana Ave Alamogordo, NM 88310	437-3891 church 437-2191 hm	<a href="mailto:felixcorji@aol.com">felixcorji@aol.com</a>	Community Kitchen Tue/Thur 5-6pm
Food Bank	Veronica Ortega-Director	Alamo Senior Center	2201 Puerto Rico (at Indian Wells) Alamogordo, NM 88310	439-4150 x 18	<a href="mailto:vortega@ci.alamogordo.nm.us">vortega@ci.alamogordo.nm.us</a>	Lunch M-F 11-1pm for 60 yrs and Older
Food Bank/Shelter	Gary Myers- Director	House of Prayer	601 Delaware Alamogordo, NM 88310	437-7880	<a href="mailto:Garylmyers88310@aol.com">Garylmyers88310@aol.com</a> or <a href="mailto:alamohop@aol.com">alamohop@aol.com</a>	B/ Lunch M-F 8:30-9:50, 11:30-12:50 Bkfst only on Sat/Sun * no emerg. plan
Business – Food, Goods, Services	Jay Scholbonm- Store Manager	Wal-mart	233 S. New York Ave Alamogordo, NM 88310	434-5870	No email	Has Plan
Business – Food, Goods, Services	Liz Santamaria – Loss and Prevention Manager	Kmart	3201 White Sands Blvd. Alamogordo, NM 88310	437-5150	No email	Has Plan
Business – Food, Goods, Services	Jim Cotton- Store Manager	Lowes	675 10 <sup>th</sup> St. Alamogordo, NM 88310	434-1900	<a href="mailto:m55@lowesmarket.com">m55@lowesmarket.com</a>	No plan

Ham Radio Operator	<b>Jim O’Leary- District Emergecy Co-Cordinator for Amateur Radio</b>	<b>N7DRB- HAM Radio</b>	<b>P.O. Box 73 Alamogordo, NM 88311-0073</b>	<b>(505)443-0776</b>	<a href="mailto:n7drb@totacc.com">n7drb@totacc.com</a>	<b>Yes plan</b>
Other	<b>Veronica Ortega</b>	<b>Alamogordo Senior Center</b>	<b>2201 Puerto Rico Ave Alamogordo, NM 88310</b>	<b>439-4150</b>	<a href="mailto:vortega@ci.alamogordo.nm.us">vortega@ci.alamogordo.nm.us</a>	<b>Evac. plan</b>

**Community Contacts (cont.)**

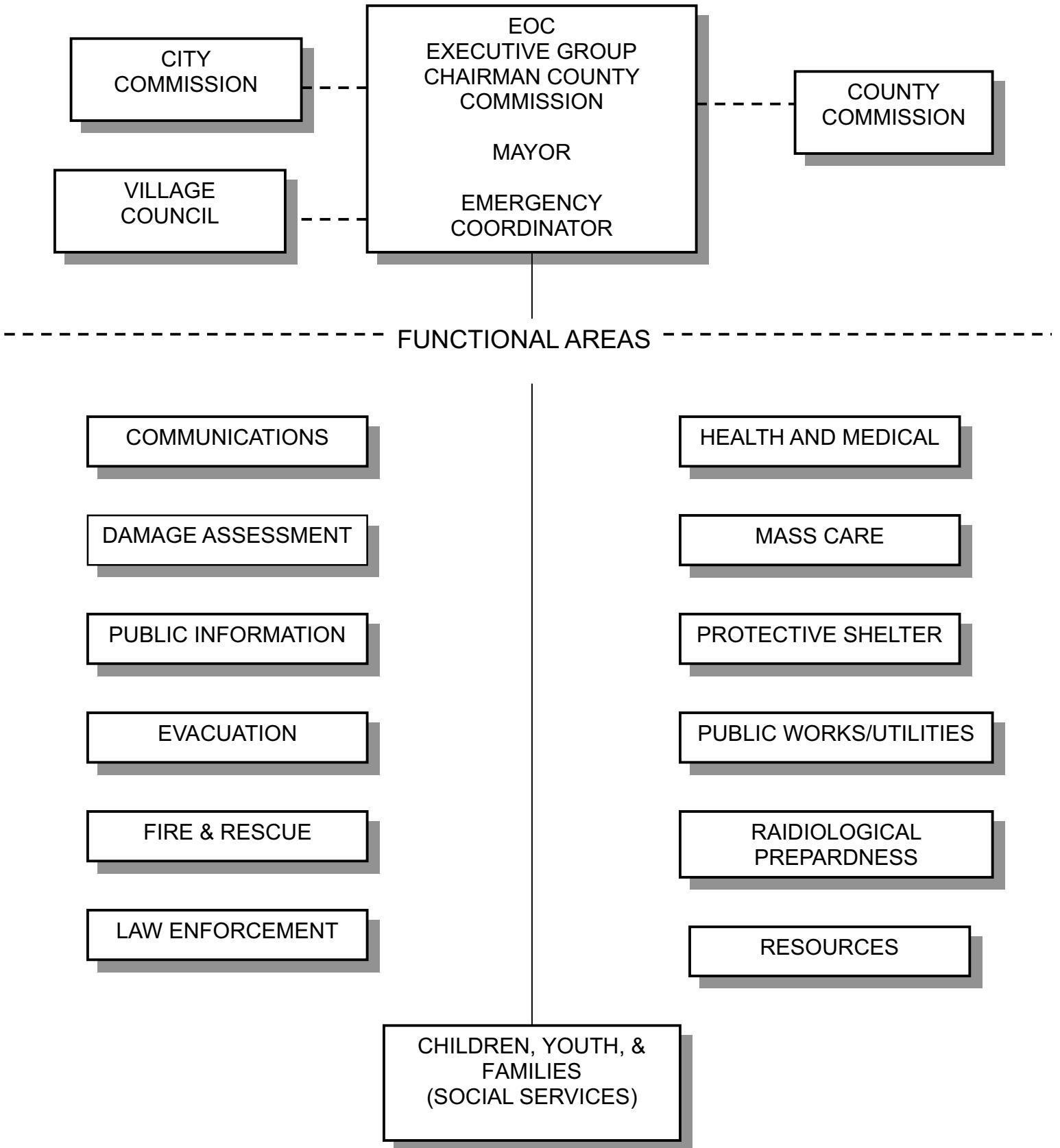
<b>Contact</b>	<b>Name/Title</b>	<b>Agency</b>	<b>Address</b>	<b>Phone/Pager</b>	<b>Email</b>	<b>Notes</b>
Other	<b>Virginia Blansett-Administrator</b>	<b>Otero County Detention Center</b>	<b>1958 Bus Center Blvd. Alamogordo, NM 88310</b>	<b>(505) 434-2519</b>	<a href="mailto:vblansett@co.otero.nm.us">vblansett@co.otero.nm.us</a>	<b>Yes Plan</b>
Other	<b>Darcy Garcia</b>	<b>SE NM Community Action Corp.</b>	<b>700 1<sup>st</sup> Street Alamogordo, NM 88310</b>	<b>437-1364</b>	<a href="mailto:dgsnmcac@zianet.com">dgsnmcac@zianet.com</a>	<b>Help with utilities, rent, medications, etc.</b>
Other	<b>Dr. Philip Knight</b>	<b>Alamogordo Public Schools</b>	<b>1211 Hawaii Ave. Alamogordo, NM 88310</b>	<b>439-3270</b>	<a href="mailto:pknight@aps4kids.org">pknight@aps4kids.org</a>	<b>Secondary Contacts:</b>  <b>Cloudcroft: School Principals - Amy Lane Elem., Fred Wright, MS, Shirley Crawford, HS</b>
	<b>Brenda Vigil</b>	<b>Tularosa Municipal Schools</b>	<b>504 1<sup>st</sup> St. Tularosa, NM 88352</b>	<b>585-8800</b>		
	<b>Glena Muncries</b>	<b>Cloudcroft Public Schools</b>	<b>800 James Canyon Hwy Cloudcroft, NM 88317</b>	<b>682-2361</b>		
	<b>Connie Higgs, Director</b>	<b>Community Christian School</b>	<b>2907 Thunder Rd. Alamogordo, NM 88310</b>	<b>434-0352</b>		



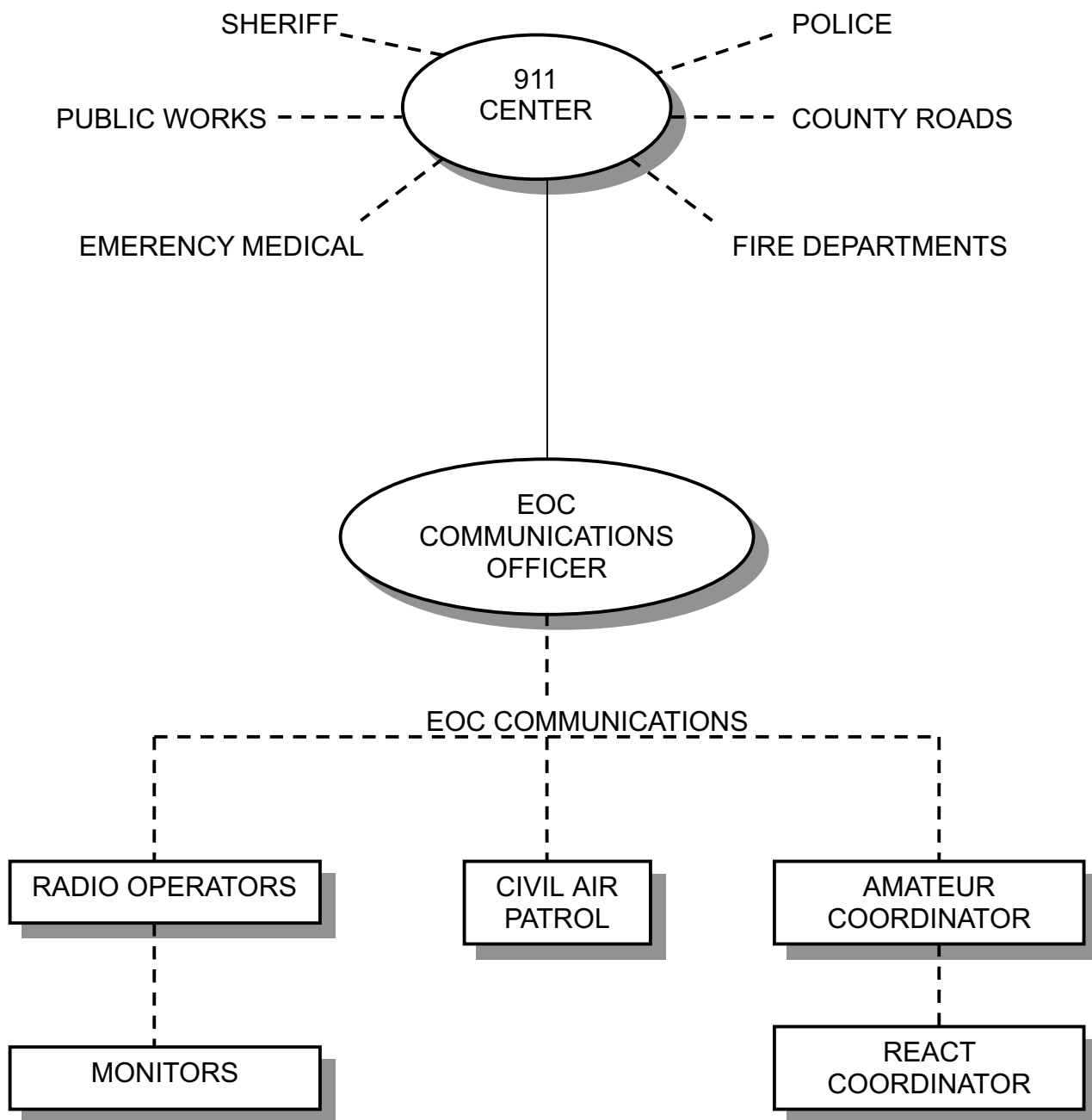
	<b>Claire Riker – Principal</b>  <b>(Unavailable due to Summer break)</b>	<b>Christian School</b>  <b>Father James B. Hay Catholic School</b>  <b>Deutsche Schule Alamogordo (German School – for dependants of German Air Force)</b>	<b>Alamogordo, NM 88310</b>  <b>1000 E. 8<sup>th</sup> St. Alamogordo, NM 88310</b>  <b>3601 N. Scenic Dr. Alamogordo, NM 88310</b>	<b>437-7821</b>  <b>437-8893</b>		<b>Tularosa Ronnie Wright, Maintenance Supervisor</b>
Other	<b>Diane Martin</b>	<b>Children In Need of Services – Child Adult Food Program</b>	<b>501 24<sup>th</sup> St. Alamogordo, NM 88310</b>	<b>434-9588</b>		<b>Work with home child care providers</b>
Other	<b>Sandra Connolly</b>	<b>Child Care Services Bureau</b>	<b>2200 Indian Wells Rd. Alamogordo NM 88310</b>	<b>439-1730</b>	<b>sandra.connolly@state.nm.us</b>	
Other	<b>Veronica Walker</b>	<b>La Vida Institute</b>	<b>200 Virginia Alamogordo, NM 88310</b>	<b>434-4795</b>	<b>veronica@zianet.com</b>	<b>Provides training for child care providers</b>
Other	<b>Christina Rutland, Deputy Director</b>	<b>NM Developmental Disabilities Planning Council</b>	<b>810 West San Mateo Suite C Santa Fe, NM</b>	<b>(505) 272-8549 800-552-8195</b>	<b><a href="mailto:infonet@unm.edu">infonet@unm.edu</a></b>	<b><a href="http://www.nmddp.com/Pages/">www.nmddp.com/Pages/</a></b>
Other	<b>Diana Jennings, Superintendent</b>	<b>New Mexico School for the Blind and Visually Impaired</b>	<b>1900 N. White Sands Blvd. Alamogordo, NM 88310</b>	<b>437-3505</b>		
Other	<b>Dr. Kelly Frost, MA CCC-A</b>	<b>Advanced Hearing Care</b>	<b>1401 10<sup>th</sup> St. Suite C Alamogordo, NM 88310</b>	<b>437-4327</b>		
Other	<b>Lieutenant Colonel Michael Beck</b>	<b>Senior Operations Officer</b>	<b>950 1<sup>st</sup> St. HAFB 88330</b>	<b>572-2630</b>	<b>michaelbeck@bundeswehr.org</b>	



**DIRECTION AND CONTROL  
ORGANIZATIONAL CHART**

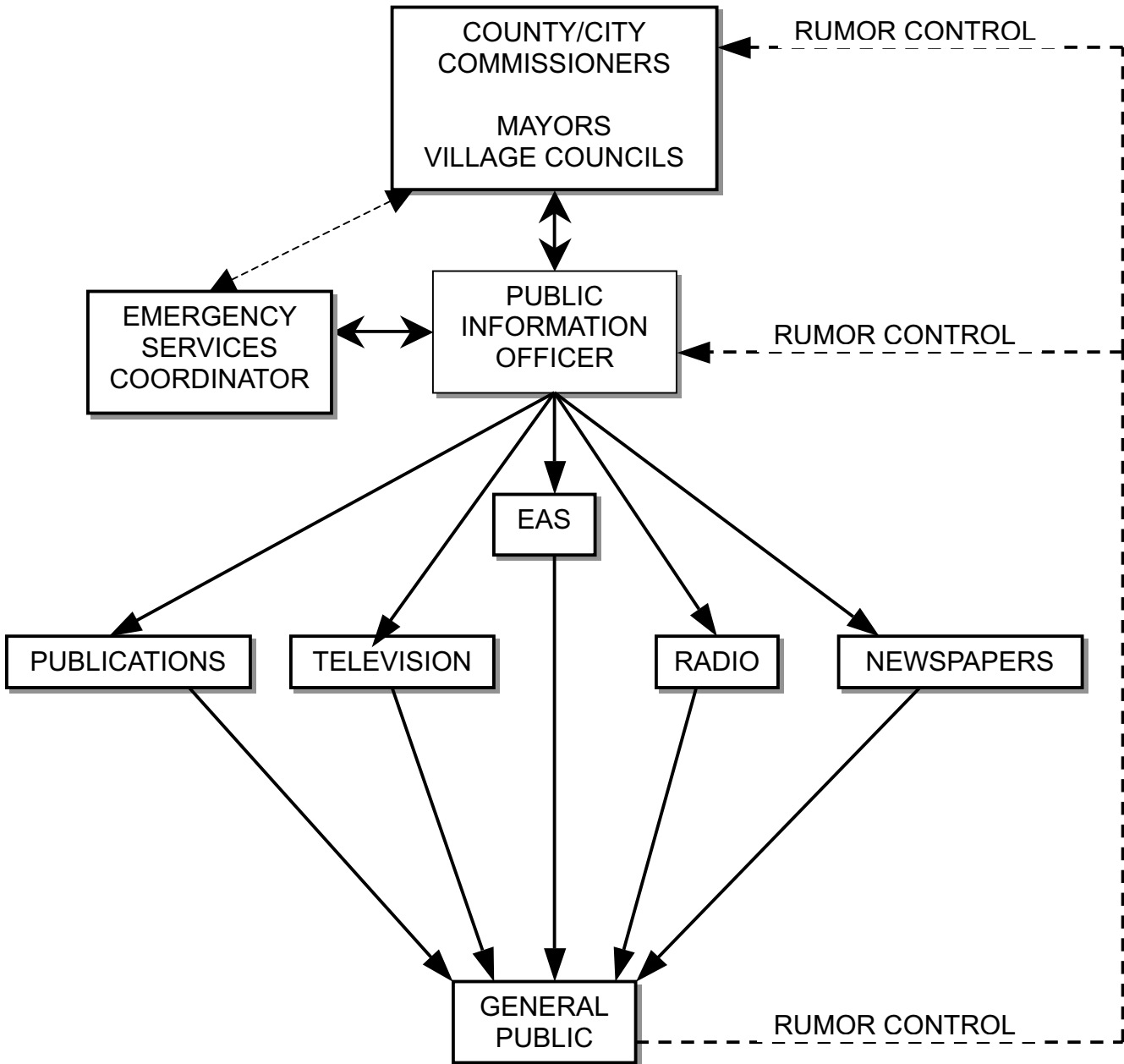


COMMUNIUCATIONS AND WARNING



**EMERGENCY**

**PUBLIC INFORMATION**



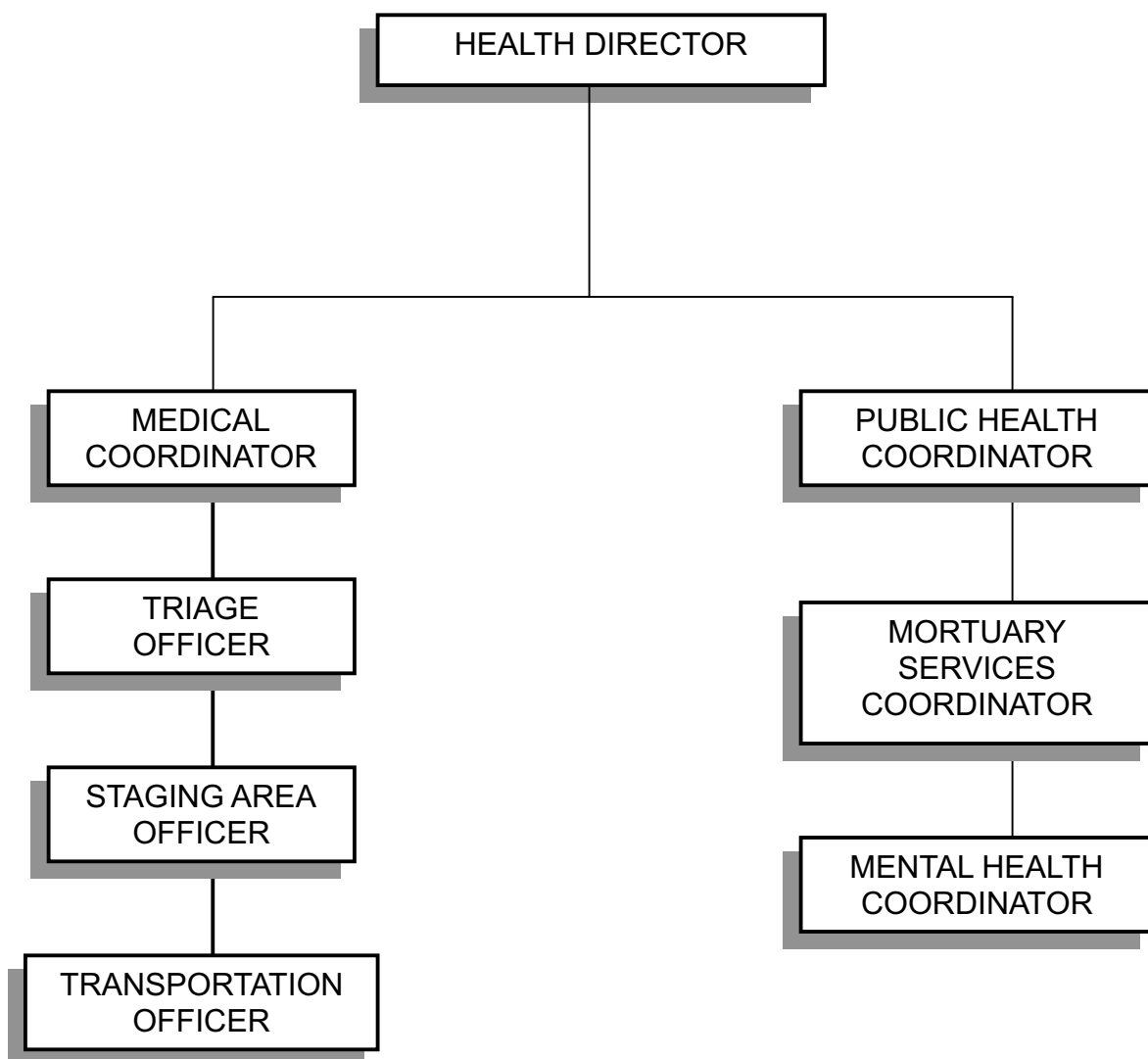
LAW ENFORCEMENT

ALAMOGORDO  
DPS

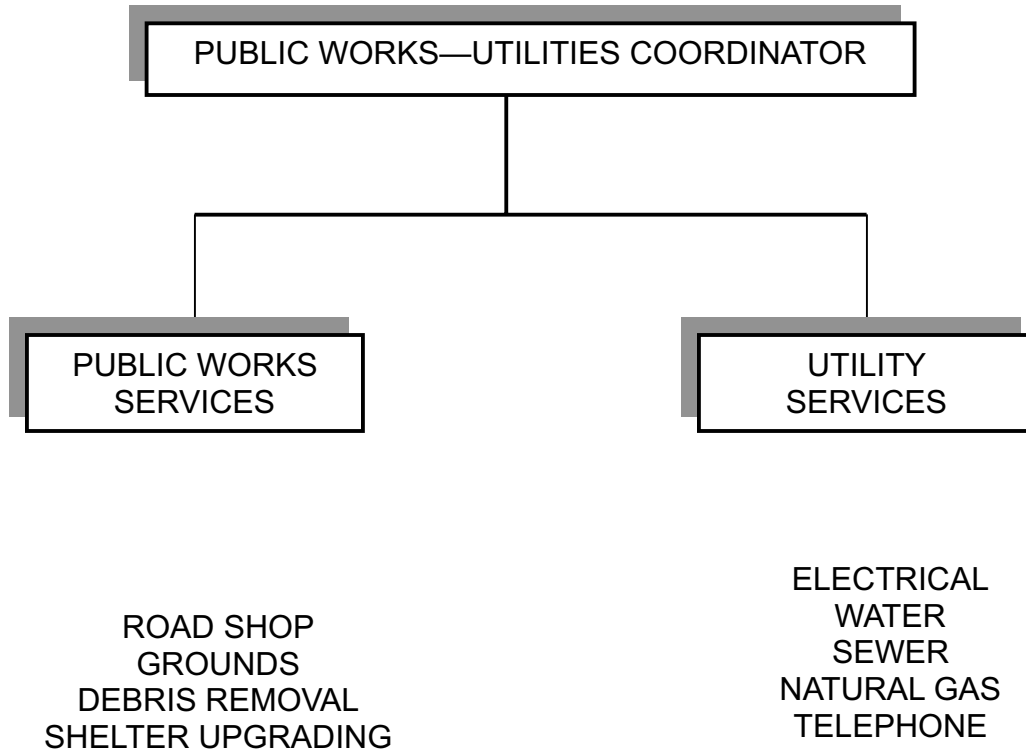
OTERO COUNTY  
SHERIFF

TRIBAL/VILLAGE  
POLICE

HEALTH AND MEDICAL

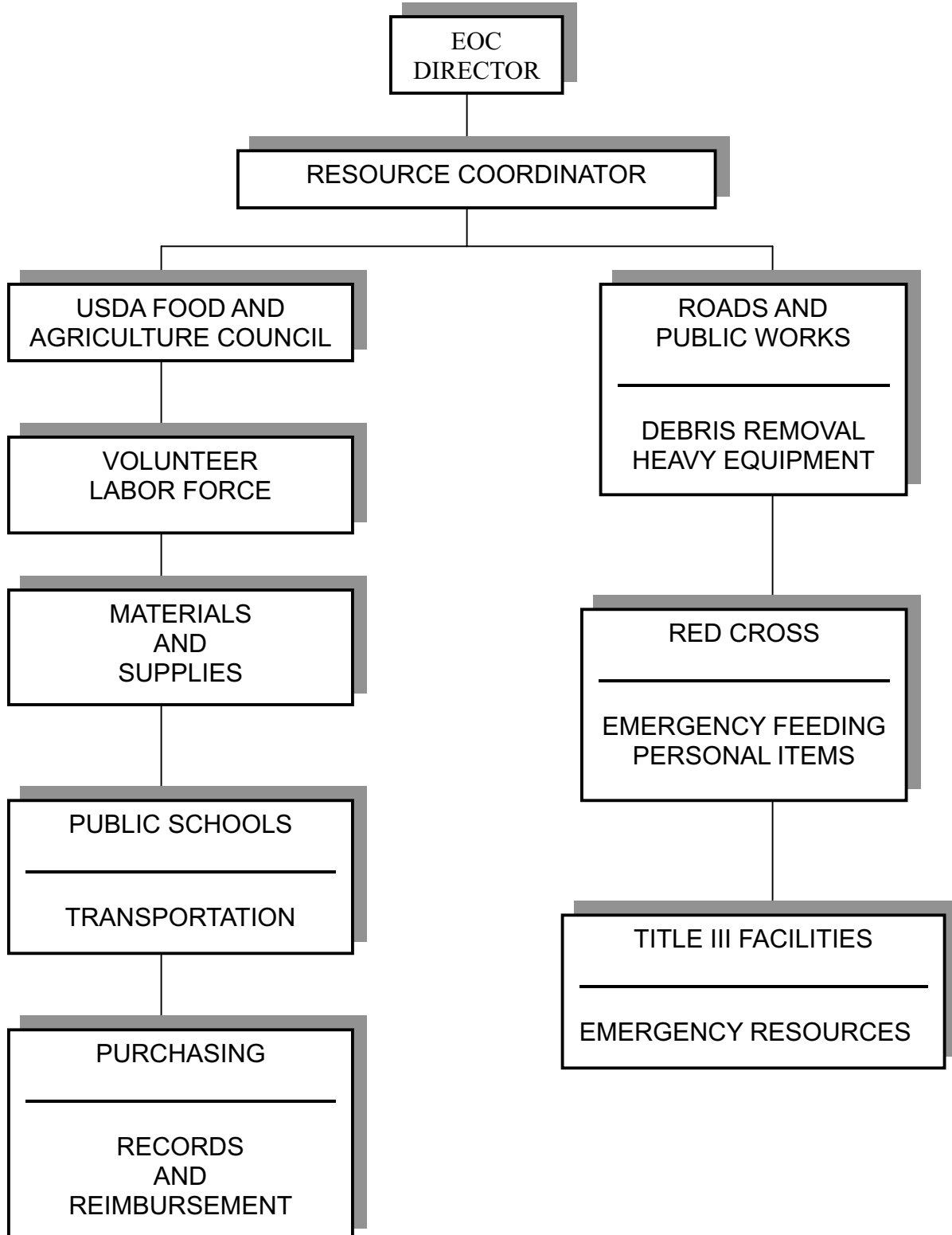


**PUBLIC WORKS--UTILITIES**

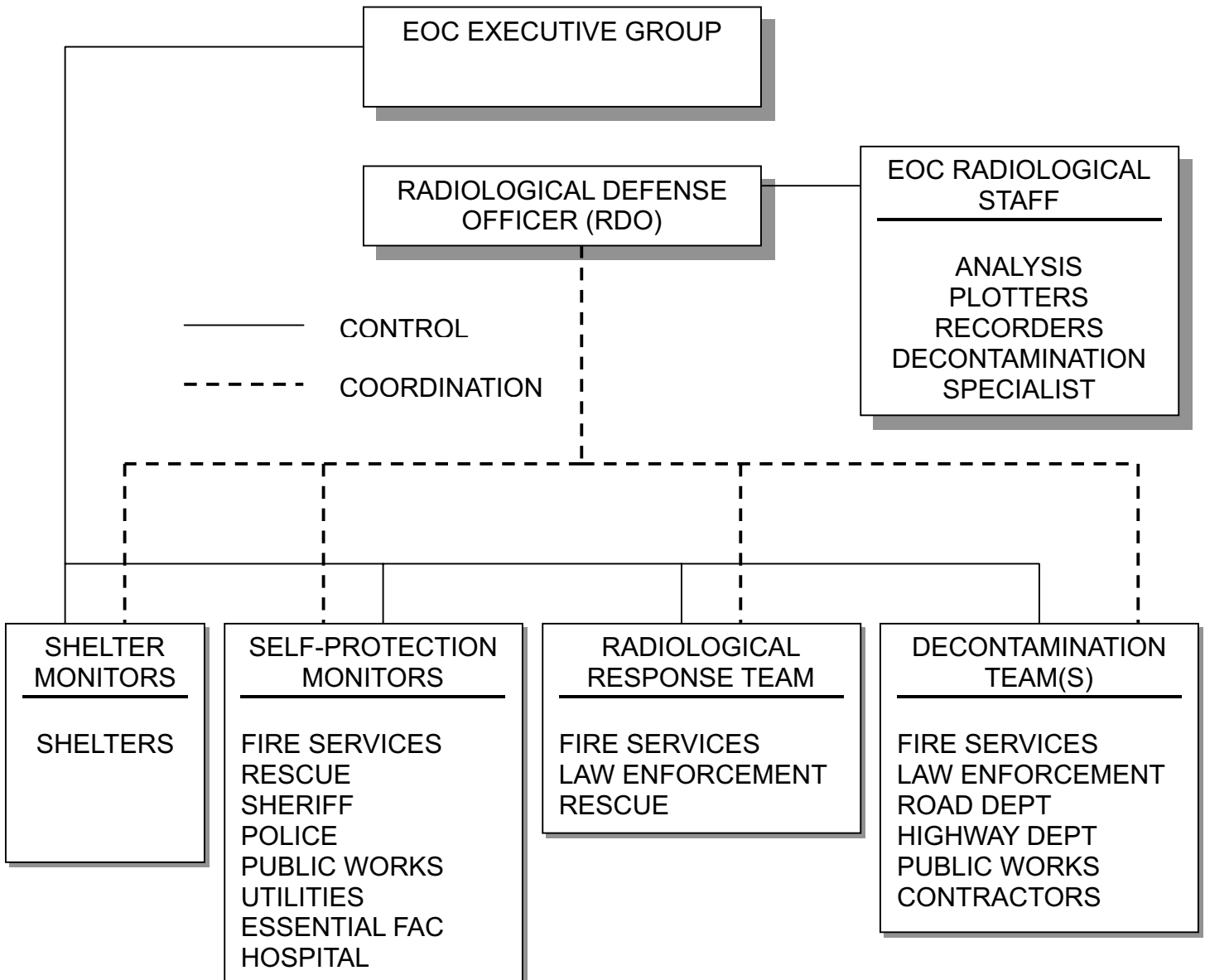




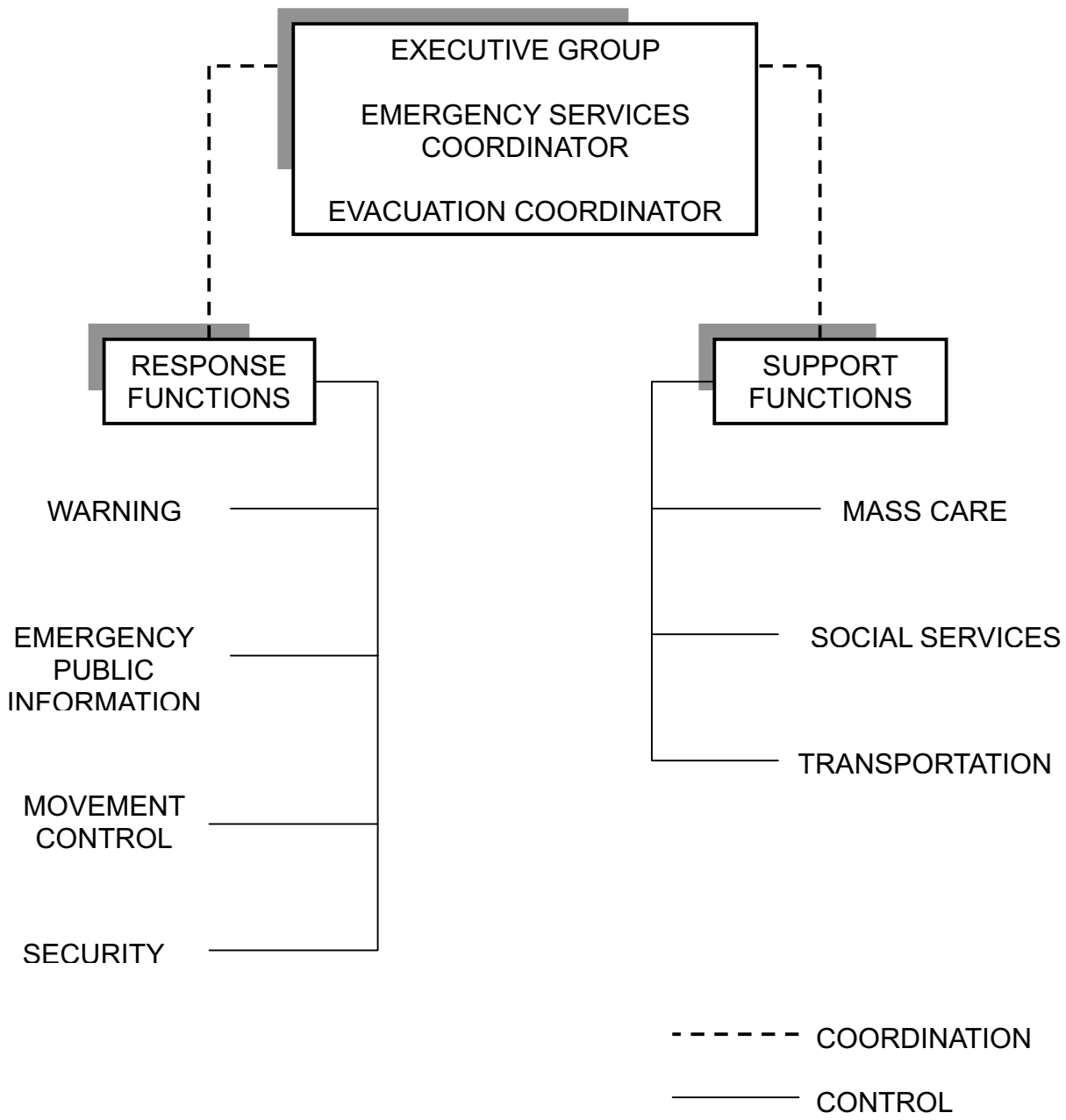
**RESOURCE MANAGEMENT**



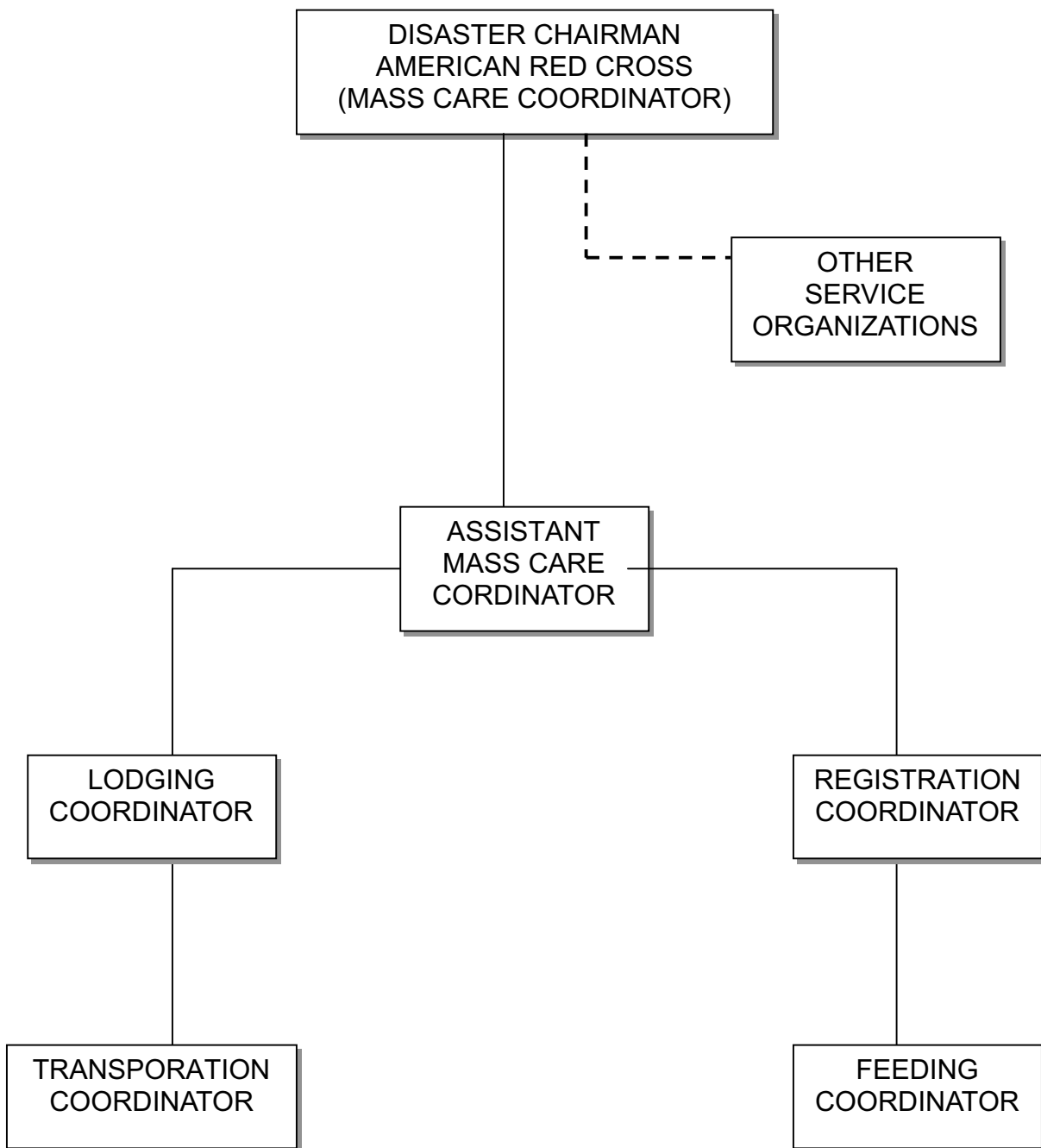
**RADIOLOGICAL REPARDNESS**



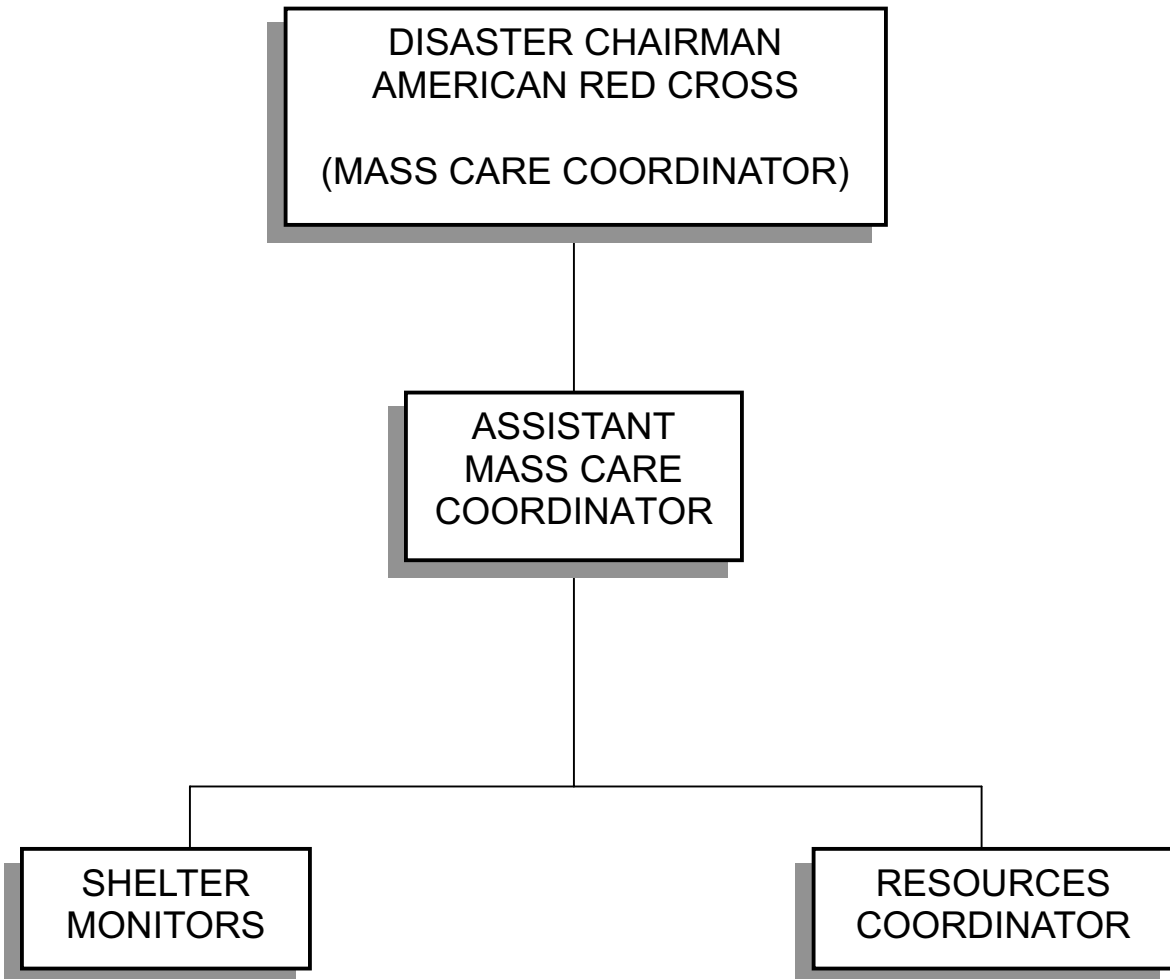
### EVACUATION



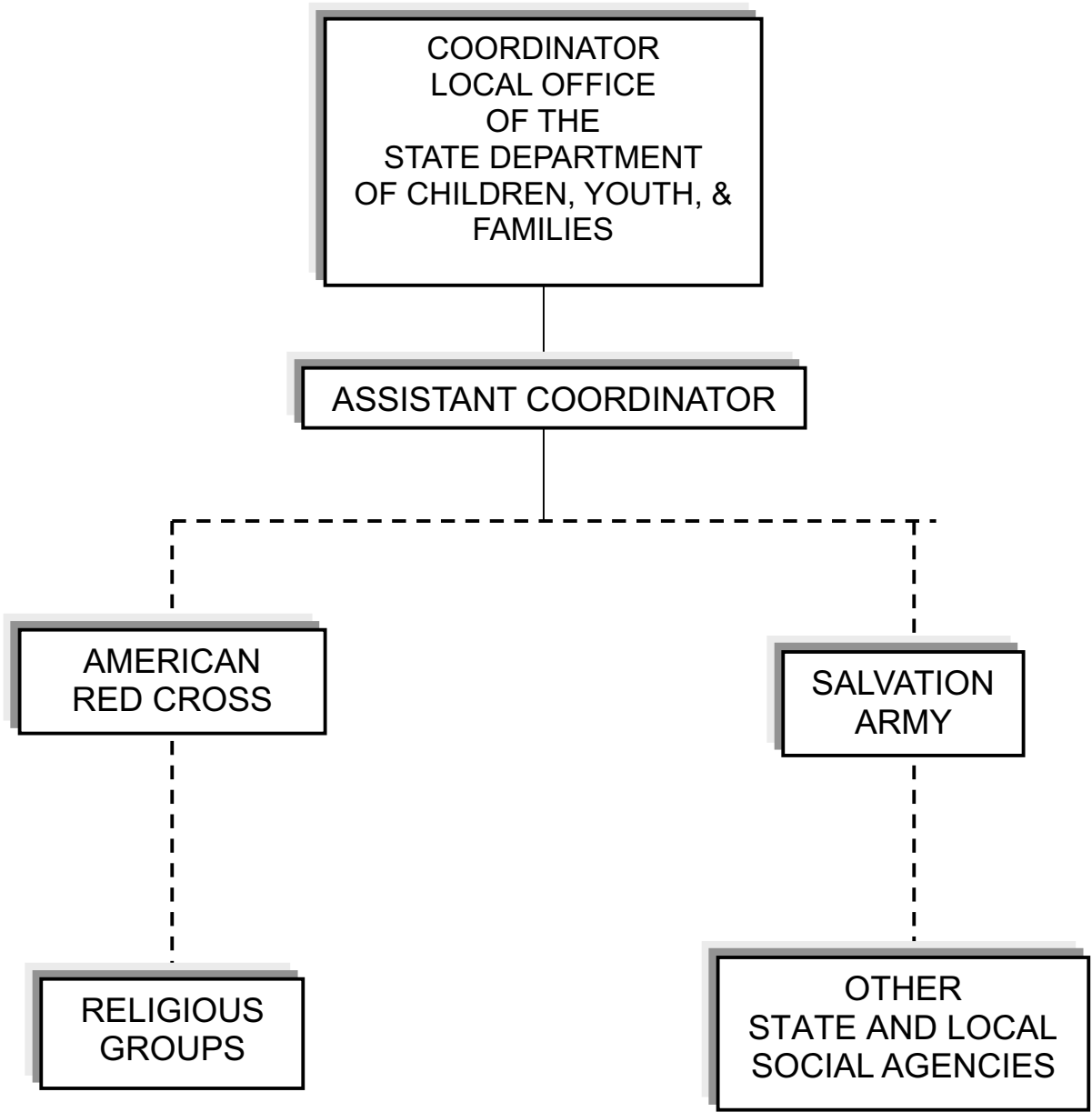
**MASS CARE**



**IN-PLACE PROTECTIVE  
SHELTER**



**SOCIAL SERVICES**



**DAMAGE ASSESSMENT**

