

COMMUNITY HEALTH EMERGENCY MANAGEMENT PROFILE

County or Tribe:	Otero County
Prepared by:	Crystal C. Gillespie
Date:	July 15, 2005
Contact Person:	Lee Ann Loney
Title:	Coordinator
Email Address:	oteromch@netmdc.com or oterochc@tularosa.net

If you have questions about completing your profile, please call or email:

Joan Murphy, Population Outreach Planning Coordinator
NMDOH Office of Health Emergency Management
505-476-7889
Joan.Murphy@doh.state.nm.us

Submitting Your Profile

Your completed Community Health Emergency Management Profile is due June 30, 2005. Please submit it electronically to Shaening and Associates, Inc., NMDOH contractors for this project. You may do either or both of the following:

Save your completed profile to a CD and send the CD to:

Shaening and Associates, Inc.
2319 Old Arroyo Chamiso
Santa Fe, NM 87505

OR

Email your completed profile as an attached file in Microsoft Word to:

Maryann@shaening.com

Distribution List

This profile has been delivered to the following persons on the following dates:

Name	Agency	Date
Gus Marker, Otero County Emergency Preparedness Coordinator	Otero County Emergency Services	7-15-05
Joe Bailey, President Otero County LEPC	Alamogordo Dept. of Public Safety (DPS)	7-15-05
Jake Meyer, Executive Director	Children In Need of Services (CHINS, fiscal agent of Otero County Community Health Council)	7-15-05
Executive Committee and Members (sent via email to over 80 members) – a draft was sent on 6-28-05	Otero County Community Health Council	7-15-05
Donna Mohr (requested copy)	Independent Counselors Offices	7-15-05
Members	Otero County LEPC	7-15-05

PART ONE: Psychosocial Vulnerability Assessment

Part One of this profile describes the demographics, socio-economic conditions, family structures, community health characteristics, and community risk and protective factors that would likely contribute to psychosocial vulnerability. This information is provided to assist the community in planning for psychosocial response and recovery in the event of a public health emergency.

Statistics used in this section come primarily from the Otero County Community Health Profile developed by the Otero County Community Health Council, 2005. When available, data from 3 years will be used.

Demographics

The demographics of this community that would likely contribute to psychosocial vulnerability and thus require unique planning are as follows:

Age Distribution

The table below shows the age distribution for Otero County from the years 2000, 2001 and 2002. For these years, the number of individuals age 39 and under decreased while the population age 40 and over increased. This is indicative of a community with a growing senior population thus leading to possible special considerations for the elderly and disabled.

Age Distribution	2000 yr	2001 yr	2002 yr
Under 5	4640	4535	4536
Age 5-19	15,410	15,140	15,088
Age 20-39	17,226	16,386	16,057
Age 40-59	15,028	15,191	15,492
Age 60-79	8635	8738	8854
Age 80+	1379	1469	1550

Source: 2003 Otero County Health Profile, New Mexico Department of Health

Race and Ethnicity

The Race and Ethnicity breakdown for Otero County includes: white (53,108 or 86.2%), black (2,608 people or 4.2%), American Indian/Alaska Native (3,795 people or 6.2%), Asian/ Pacific Islander (999 people or 1.6%). 1,067 people, or 1.7% of the population, identified themselves with “two or more races (Otero County Health Profile, New Mexico Department of Health, 2003).

Primary Language

Over 70% of the population in Otero County 5 years and older speak English only. 23% of those who speak a language other than English are Spanish speaking and “speak English less than very well” (2000 US Census). This data may have significance when those “speaking English less than very well” wish to access services in Otero County. There would be some necessity for agencies to consider bilingual employees or translation services, specifically for our Spanish speaking population. Other languages spoken in Otero County include German, due to the large German population at Holloman Air Force Base. There are nearly 2000 Germans living in Otero County due to the influx of the German Air Force. The community has made some accommodations for these populations in public places by including English, Spanish, and German on signage.

Socio-Economic Conditions

The socio-economic conditions of this community that would likely contribute to psychosocial vulnerability and thus require unique planning are as follows:

Per Capita Personal Income

In 1999 the personal income wages in Otero County were an average of 16,313 dollars per year. In 2000 the personal income average was 16,748 dollars, an increase of 435 dollars. In 2001 the personal income average increased by 975 dollars totaling 17,724 dollars for the year.

Income in Otero County is, in general, lower than that of New Mexico. This may be due to the types of jobs available and the cost of living here compared to larger urban communities. Though new jobs have come to Otero County in recent years, through call centers, home improvement centers, and restaurants, these are not generally high paying jobs. However, recruitment of new business is continuing, some of which may include the desired higher paying positions.

Household Income

According to American Fact Finder and the US Census Bureau, the average household income for Otero County is 30,861 dollars a year compared to the United States’ average of 41, 994 dollars per year.

Unemployment Rate

According to the 2000 US Census, the unemployment rate in Otero County was 5.5% for both 2000 and 2001 but increased to 5.9% for 2002.

Monthly TANF and Food Stamps

In 2003 monthly TANF enrollment in Otero County was 236 or 0.4% of the population. Enrollment for monthly food stamps was 1,258 or 2%.

Medicaid Eligible

Medicaid enrollment in Otero County for both children and adults in 2000 totaled 7,308 people. Eligible children equaled 5,196 and eligible adults equaled 2,112.

Poverty

In 1997, 17.7% of the population of Otero County was living below the poverty level, while 25.8% of the children under age 18 were living in poverty (Office of New Mexico Vital Records and Health Statistics 2002). In 1999, the population of Otero County living in poverty was 16.3% (percent total population) and 25.3% (children under 18), compared to New Mexico 18.2% and 26.4%, respectively (Office of New Mexico Vital Records and Health Statistics 2003). These differences may not be significant however.

Family Composition

Family composition characteristics of this community that would likely contribute to psychosocial vulnerability and thus require unique planning are as follows:

Distribution of Family Size

According to the 2000 US Census report, the average household size in Otero County is 2.66 persons, with an average family size of 3.14 persons compared to the United States (2.59 for household size, and 3.14 for average family size).

Grandparents as Caregivers

According to the US Census Bureau 2000 census, the number of grandparents living in households with one or more grandchildren under 18 years of age in Otero County is 1,368. Of those, 849 grandparents were responsible for the grandchild.

Community Health Characteristics

The community health characteristics of this community that would likely contribute to psychosocial vulnerability and thus require unique planning are as follows:

Birth Rate

The crude birth rate for Otero County in 2000 was 13.9 where as in 2001 it dropped down to 13.7 and then in 2002 it increased to 14.4 (though these differences are not likely significant). Possible reasons for the changes in birth rate may include the large number of military personnel moving in and out of the city because of permanent change of duty stations, or large number of military personnel who were deployed after the September 11th attacks. The return of the deployed military members in 2002 could also have contributed to the 2002 increase.

Mothers under 20

For 2000, 148 or 17.2 % of the children born were born to mothers under the age of 20 in Otero County. In 2001, 128 or 15.2% of the children were born to teenage mothers and in 2002, 144 or 16.5% of the children were born to mothers under the age of 20.

BR of Single Mothers (percentage used instead of rate)

In Otero County the single mother births have increased between the years 2000 and 2002. In 2000, the number of children born to single mothers was 268 or 31%. The number if children born in 2001 to single mothers was 279 or 33.2 % and in 2002, 318 or 35.9% or children were born to single mothers in Otero County. This indicates an overall increase in births to single mothers. However, this does not necessarily indicate the number of single parent households.

Children with Chronic Health Conditions

According to the NM Dept. of Health Otero Community Health Profile for 2003, in the year 2000 there were 2,585 children registered in the Chronic Conditions Registry in Otero County compared to New Mexico's 90,768 children. Some of these conditions include congenital anomalies, neural tube defects, Down syndrome, cleft lip/cleft palate and asthma.

Child Abuse

For Otero County in the year 2002 there were a total of 389 cases of child abuse. There were a total of 263 investigated cases and 126 substantiated cases. The State of New Mexico, for 2002, had a total of 4,089 substantiated and 10,067 unsubstantiated investigations totaling 14,156 child abuse cases (NM Children, Youth and Families Department, Child Protective Services).

Adult Abuse

For Otero County in the year 2002 there were a total of 170 cases of adult abuse with 42 of them being substantiated and 128 of them being unsubstantiated. In comparison to New Mexico's total of 5044 cases, 1475 substantiated and 3569 unsubstantiated. Otero County, however sits at 75.2% which is higher than the state's 70.8% of unsubstantiated investigations. Otero County does sit slightly lower at 24.7% compared to the state's 29.2 % of substantiated investigations for adult abuse (NM Children, Youth and Families Department Protective Services Division Fact Book, Forth Quarter and Annual 2002).

Injury by Mechanism

For Otero County, through the years of 1999 to 2001 there were a total of 116 deaths by mechanism. The mechanism categories are cut, drown, fall, fire/burn, firearm, motor vehicle, poisoning and other. Among the highest percentages of injury by mechanism included: 21.5% of due to motor vehicles, 15.7 % due to fire arm, 9.7 % due to poisoning and 8.7% due to falls. (Otero County Health Profile 2003 and Otero Community Health Profile March 2005)

Motor Vehicle Fatality Rate

In Otero County for the year 2001, for persons under the age of 19 there were zero fatalities. There were a total of 1,209 crashes with 14 fatal, despite the crash rate that has increased from 1999 to 2001. For 1999 the crash rate was 141, for 2000 it was 169, and for 2001 it was 174.

Community Risk and Protective Factors

Community risk and protective factors in this community that would likely contribute to psychosocial vulnerability and thus require unique planning are as follows:

School Achievement and Drop Out Rate

The high school (9th-12th grade) drop out rates in Otero County for the 1999-2000 school year was 1.6 compared to New Mexico's 6.0. In 2000-2001 school year Otero County was 1.2 compared to New Mexico's 5.3 and the 2001-2002 school year remained the same as the previous year compared to New Mexico's 3.6. The dropout rate in Otero County is lower than that of New Mexico, and both are decreasing overall.

Though our high school drop out rates are currently very low compared to New Mexico, there is some concern among those working with youth and in education related fields that this rate (1.2) is not reflective of the real situation. According to New Mexico Kids Count 2001 Data Book, the drop out rate for Otero County in the 1990-1991 school year was 7.4, but dropped to 2.0 the following year, probably due to a change in how the rate is calculated. This is a source of some speculation among those who work with youth in Otero County. Some believe that current numbers do not count all youth who actually drop out. (Office of New Mexico Vital Records and Health Statistics 2003)

Domestic Violence

In 1999-2000, Otero County reported 440 Domestic Violence cases per year (Source: COPE, Center of Protective Environment, a local domestic violence shelter, 2004). In FY02, COPE reported that 3,407 total bed nights were provided for 120 persons, with an average length of stay of 28.4 nights. According to the Office of New Mexico Vital Records and Health Statistics 2003, less than one fourth of the 170 investigations of domestic violence in Otero County in 2002, were substantiated. For the same period in Otero County, there were 126 substantiated cases of child abuse (389 total reported).

Substance Abuse-alcohol

In Otero County from the years 1999-2001 the alcohol related death rate is among the lowest out of all counties in New Mexico. Otero County's alcohol related death rate is 53 compared to the state's 56.5, and ranks 19th in the state. Otero County ranks 27th in the state for alcohol related crashes with a rate of 18.9, where as our neighboring Lincoln County ranks 9th with a rate of 33.7. For alcohol involved fatalities, the rate in Otero County is 7.0 compared to the state's 10.8. Finally, Otero County ranks 19th in the state for alcohol related crime rates with a rate of 1850. This is less than the state's 2174 alcohol related crime rate and all of Otero's neighboring (bordering) counties exceed the statewide rate except Eddy County (rate of 1742). (From the New Mexico Dept. of Health 2003 Social Indicator Report.)

Substance Abuse-Other Drugs

Otero County lies within the High-Intensity Drug Trafficking Area (HIDTA) for the Southwest border. The Southwest Border HIDTA New Mexico Partnership reports seizures of Mexican marijuana totaling 90,306 Kilos in 2000 and 114, 350 Kilos in 2001.

The New Mexico Dept. of Health 2003 New Mexico Social Indicator Report ranks Otero County 11th in the state for alcohol use in the past 30 days, 9th for binge drinking in past 30 days, 8th for marijuana use in the past 30 days, 9th for cocaine use in last 30 days, and 4th for inhalant use in past 30 days. This document also ranks Otero County 10th for DWI arrest rates, 12th for drug related crime, and 11th for DWI in past 30 days. (Note: the phrase “past 30 days” refers to the survey questions which asked subjects if they used a specific substance in the past 30 days.)

Otero County is ranked 21st in the state for drug related deaths for the years 1999-2001. For drug related hospitalizations through 1999-2001 the rate in Otero County was 220.9 (19th in state) compared to the state’s rate of 280.5. The drug only treatment admission rates for Otero County are 5.6 (29th in the state) for the years of 1999-2003. In Otero County the rate for drug related crimes was 1671 compared to the state’s 1937. Otero County ranks 12th in the state for its drug related crime.

Access to health insurance/medical care

Otero County is considered a Partial Health Professional Shortage area for Primary Medical Care Professionals, and a Shortage area for Dentists (NM Health Policy Commission). This means that basically, Otero County does not have sufficient health care access to medical and dental services. However, there are options in surrounding cities like El Paso, Las Cruces, and Albuquerque, but access to these resources is also limited due to transportation issues, etc.

Access to child care

Access to child care is a problem in Otero County. There is a general shortage of child care facilities in the area. In 2002, child care centers in Otero County (including Head Start centers in Alamogordo, Tularosa, La Luz, and Mescalero) served over 900 children. Since then, 2 new centers have opened, and several of the existing centers have opened more slots for infants and toddlers. However, many centers still maintain waiting lists as the availability does not meet demand. There are also many home day care providers (over 75 in 2002) which serve 4-12 children per home. These home day care providers are licensed through the Children Youth and Families Department (CYFD) and monitored by CYFD and Children In Need of Services.

Housing characteristics

Of the total 23,105 households in Otero County (over half (57%) are represented by married couples, 23% are single person households, 12% of the households are headed by females, and 8% are householders over age 65.

Homelessness

Otero County has a homeless population, living predominantly in the desert near Alamogordo rather than in the mountains or in the more remote parts of the county (Alamogordo Department of Public Safety, 2004). However, this population is currently not being tracked or documented officially, therefore population numbers, growth, etc. are unknown.

Crime Rate-adult and juvenile
(Continued on next page)

Crime Rate-adult and juvenile

The crime rate information provided here is only for Alamogordo, as the information for Otero County as a whole is unavailable. The Otero County Sheriff's office began reporting this year to the Department of Justice Uniform Crime Report, but the Villages of Cloudcroft and Tularosa currently do not. So some additional statistics may become available in the future.

For 2004 the Crime rate in Alamogordo is 288 per 10,000, with a Dept. of Public Safety force of 63 officers. Alamogordo is the second lowest for its crime rate in the state of New Mexico. The tables below show the differences in 2004 crime rates and 2001 crime rates. Information provided by the Alamogordo Department of Public Safety.

Table 1

Table 2

2004 Calls for Service		2004 Major Crimes	
• Police	25,533	Crimes Against Persons	
• Fire	675	• Homicides	1
• EMS Dispatch	4,233	• CSP	7
• Animal Control	3,928 Calls	• Robberies	9
• Total Calls	34,369	• Assaults	454
2004 DPS Response		• Dom. Disturb.	722
• 412.....Felony Arrests		2004 Property Crimes	
• 476 Drug Related Arrests		• Burglaries	128
• 734.....Juvenile Referrals		• Larcenies	732
• 1,623Warrants Served		• Shopliftings	327
• 1,900.....Non-Traffic Citations		• Criminal Damage	727
• 3,964.....Total Arrests		• Vehicle Thefts	31
• \$110,642.....Stolen Property Recovered		• Loss Value	\$502,825
• 18..... Motor Vehicles Recovered			
2001 Crimes Against Persons		2001 Property Crimes	
Homicides	1	Burglaries	110
CSP	11	Larcenies	961
Robberies	7	Shopliftings	486
Assaults	556	Criminal Damage	593
Domestic V.	440	Vehicle Thefts	25
loss Value	\$470,726	loss Value	\$470,726

Table 3

Table 4

2001	Narcotics unit
356	New Cases Handled
344	Felony Arrests
13,074	Pounds of Marijuana Seized
NEU Cash Seizures	\$70,437
NEU Vehicle Seizures	51

Teen Suicide rate

According to the Office of NM Vital Records and Health Statistics 2003, from 1998-2002 there were 4 homicides (rate of 16.4) and 3 suicides (rate of 12.3) among youth ages 15-19 in Otero County (rates similar to New Mexico). YRRS data indicated that nearly one

quarter of youth (9th-12th grade) have seriously considered suicide (22% for 2001 and 17% for 2003), while fewer actually attempted suicide (15% from 2001 and 14% for 2003). Over 25% of students reported carrying weapons in the past 30 days, as well for both years.

Adult Suicide Rate

According to the 2003 New Mexico Social Indicator Report, the adult suicide rate for Otero County for the years 1999 to 2000 was 19.8 just above the state's rate of 18.9.

DWI Rate

For the year 2002 the DWI rate for Otero County was 7.4 compared to New Mexico's 10.1. According to the 2003 NM Social indicator report, Otero County ranks the 10th highest for DWI arrests for 1999-2000. According to the officer in charge of the DWI program in Otero County there are about 500-600 offences per year.

PART TWO: Populations with Different Planning Needs

Part Two of this profile describes an estimated number of various sub-populations within the community who may require different planning for responding to and recovering from a health emergency. Individuals and agencies that can serve as liaisons or information conduits are identified.

Children

The planning needs of children need to be addressed by providing services that are age appropriate, culture sensitive and environment friendly. A collaborative effort from families, schools, medical providers, religious organizations and mental health providers will help make the transition in a crisis much smoother. Lisa Patch with Alamogordo Public Schools and Sharon Hodges with New Mexico Department of Health are making plans to develop an Emergency Psychosocial Health Plan for the Alamogordo Public Schools. This plan could possibly be adapted by other school districts. Liaisons for this group would include Adrian Guerrero (APS District Safety Specialist; Veronica Walker of La Vida Institute (for child care centers); Children In Need of Services (for home child care providers) Sandra Connolly (CYFD/Child Care Services Bureau); and the Superintendents of each school district.

Elderly

There are 7,786 people over the age of sixty five in Otero County. There are 3 nursing homes located in Alamogordo: Casa Arena Blanca and Betty Dare Good Samaritan Center and La Francoise. Alamogordo also has one assisted living facility; The Aristocrat. In addition there are four hospice and home health care companies and one respite care center that are available to help assist in those areas as well. The Alamogordo Senior Center Director-Veronica Ortega is the liaison for this population.

People with chronic mental illness

The number of chronic mentally ill in Otero County is unknown. It is estimated that 3-5% of the population suffers from some kind of mental illness. Unfortunately many of those people are not accessing the services that are provided for this population. There are nine counseling/mental health facilities in Otero County. Jim Kerlin is The Counseling Center director and he would be the information conduit for this particular population group.

People with substance abuse problems

Key informants in the area of substance abuse feel that the numbers accessing services in Otero County do not equal the number with substance abuse issues. There are two main substance abuse facilities that assist people with substance abuse problems; The Counseling Center and the Otero County Council on Alcohol. The Counseling Center is currently serving about 165 non residential or outpatient clients. This number indicates those where substance abuse is the primary diagnosis. The Counseling Center primarily works with people who have substance abuse and mental health issues as well (co-occurring disorders). The Council on Alcohol serves about 450 people with substance abuse problems per year. The liaison for this population group is Santiago Rodriguez with the Otero County Council on Alcohol or Jim Kerlin with The Counseling Center.

People with cognitive or developmental disabilities or physical disabilities

Estimated number of people with developmental disabilities living in the Otero County is estimated at 11,083 people compared to the state's 33,776 people. The figure provided is based on 2003 population estimates via census data and the Golley formula (1.8 x # population) to determine estimates of those with disabilities. New Mexico's population has increased by 3.1% since 2000, so the actual number is possibly higher. NM's high rates of poverty, alcohol & substance abuse, pre-term births, lack of prenatal care & high rate of teen pregnancy support an elevated prevalence rate. The information conduit for this population group would be Christina Rutland, Deputy Director of the NM Developmental Disabilities Planning Council.

People with Physical Disabilities

According to the US Census Bureau, 2000 Profile of Selected Social Characteristics the number of non- institutionalized people with cognitive, developmental or physical disabilities in Otero County is 10, 868. There are several support organizations for people who are physically disabled. The NM Division of Vocational Rehabilitation, The Opportunity Center, Disability Resource Center, Alamogordo Cross Disability Coalition are just a few of the types of services available for those who are physically challenged. Eileen Brown with the St. Jude Mission would be liaison for this population group.

People who are blind or have visual impairments

The number of individuals with visual impairments is about .8% of 1% of all people in New Mexico. Alamogordo has two support services for the individuals with visual impairments; The New Mexico School for the Blind and Visually Impaired (serving 64 students in 2001, per the OCCHC Health Profile FY05) and The Commission for the Blind. The placement of these facilities in Alamogordo has naturally increased our county's population of people with visual handicaps. This would be a population needing special assistance in times of crisis. Many of the students at the School for the Blind and Visually Impaired also have developmental

disabilities, adding to their special needs. The contact person or liaison for this population group is Diana Jennings, the superintendent of the New Mexico School for the Blind and Visually Impaired.

People who are deaf or have hearing impairments

The number of people who are deaf or hearing impaired in Otero County is unknown. There are two support and treatment facilities available in Otero County for those with hearing impairments: Advanced Hearing Care and Southwest Hearing Services (maintains a local office but also has offices in Las Cruces and El Paso). Dr. Kelly Frost with Advanced Hearing Care would be the information conduit for this population group.

Non-English speaking populations

There are two major non-English speaking populations in Otero County. The German population brought here by the German Air Force and the Hispanic population, many who have immigrated into Otero County from Mexico. There is a large population of Hispanics that reside in the Chaparral area in particular. The US Census states the population of Chaparral is 6,107, however information from Otero County officials estimates the population size to be closer to 20,000. Many of these people do not speak English and are possibly undocumented. Note: Chaparral is located on the border extending into Otero and Dona Ana Counties and Texas. This causes several jurisdiction problems for this community. The liaison for the German speaking population would be Lieutenant Colonel Michael Beck, Senior Operations Officer for the German Air Force. However, a liaison for the Spanish speaking population has not been identified. At a recent emergency lock down at a local elementary school, it was determined there were not sufficient translators available for the Spanish speaking students and their parents.

Undocumented individuals

The number for undocumented individuals is unknown for Otero County as there is no official organization that is the liaison for this population group.

People who are homeless

The exact number of homeless people in Otero County is unknown. The House of Prayer located in Alamogordo is the only facility in Otero County where homeless people can get a meal and hot shower. The liaison for this community is the House of Prayer director, Gary Myers.

Incarcerated and other institutionalized people

The Otero County Detention Center is located in Alamogordo and is where the majority of people are held. Otero County does house a state prison located near Chaparral as well. In addition, there are 3 residential treatment facilities in Alamogordo, including the James House (32 bed capacity), the Otero County Council on Alcohol Abuse and Alcoholism (27 bed capacity), and La Placita (a 12 bed juvenile facility). The Juvenile Probation and Parole Office (JPPO) is available for youths after they have committed the offense. The JPPO refers the offender to different programs in the community to keep the juvenile from committing an offence. Again those programs are the First Offenders program and Teen Court. Sylvia King with The James House, Santiago Rodriguez with the Otero

County Council on Alcohol would be the liaisons for this population group as well as the administrator at the Detention Center, Virginia Blansett.

PART THREE: Psychosocial Response Capacity

Part Three of this profile describes various strengths, resources, and challenges in the community that may affect psychosocial response capacity.

Leadership and Local Communication

Gus Marker is the Otero County Emergency Manager however if there was a public health emergency, the first contact would depend on the type of emergency. Many times the calls go through the police dispatch systems and they hear about the crisis/emergency first. Then they call on whoever is closest and needs to be contacted. If a public announcement would need to be made, the mayor or chief of police or fire would step up to coordinate the community. Our hospital is such a key component in our community they would also be there to help support the community in many ways. Communication channels exist in the LEPC emergency plan. The Otero LEOP Flowcharts are provided in Appendix A. Otero County is a small community that sticks together during major crisis/emergency.

Volunteer groups and organizations: Community and Neighborhood Organizations

There are a total of 273 volunteer groups in Otero County all together and about 120 of them are health volunteer groups that provide services for the community. Groups range from Alcoholics Anonymous, support groups for drug abuse, disabled children, Alzheimer's, visual impairments, cancer, and mental illness. A complete list of the volunteer groups is available on line at The Chamber of Commerce web site <http://www.alamogordo.com/profile/clubs.html>. We also have a total of 95 churches in the community. Refer to this additional website for the complete list and contact information for each organization <http://www.ocedc.com/life/religious/html>.

Experience on Crisis

Fortunately Otero County and specifically the community of Alamogordo and its surrounding areas have not experienced any major public health emergency, crisis or widespread emergency. In 1957, the city of Alamogordo received 2 inches of rain in 2 hours. This resulted in the construction of ditches to prevent future flooding. A minor public health scare.

There are periodic forest fires, some of which have resulted in property loss and some related loss of life. Major fires in recent years include the Scott Able fire of May 2000 which destroyed homes and property in the Sacramento Mountains near the Communities of Sacramento, Weed, and Timberon. There was also substantial rainfall in the following months which led to severe flooding in the burn areas. Also a plane crashed during the fire fight which led to loss of 3 lives. Also, the Rio Penasco fire of April and May 2002 caused severe damage near Mayhill and though the cause of the fire was determined to be accidental, the man who started the fire committed suicide as a result.

Also, more recently, there was a lockdown of some area schools in March 2005 in Alamogordo due to a standoff between an armed man and the police. The incident ended with no casualties, but evaluation of the incident indicated a lack of Spanish speaking translators.

Recent experiences or changes that could affect response and recovery

Otero County also has been very fortunate in the fact that we have not endured any major changes or experiences that have affected response capacity. The county unfortunately does not have the access to specialty medical care and many people are referred out of the county or state for those services. The community of Alamogordo depends on the Holloman Air Force Base for services to the community as well and for economic reasons. Holloman Air Force Base personnel and their families contribute greatly to the economic base of Otero County, and many civilian residents are employed by Holloman. Many military dependents are employed by local businesses as well. Therefore the community would be greatly affected if the Holloman Air Force Base was to close. It was recently announced (through the Base Realignment and Closure process) that Ft. Bliss, located in El Paso, TX, but lying partially within Otero County, will see an increase in personnel of over 10,000. With Ft. Bliss so close to Otero County, it is possible that some of the increase could be located in Southern Otero County (around Chaparral).

There is a lot of work being done in the area of economic development (see “Overall Strengths” below) in Otero County. With continued success in this effort, the county will continue to grow, both in population and economic activity. This could have an impact, both positive and negative, on the capacity for response and recovery in case of emergency. With growth could come more available resources, but more people could be affected by any single incident. If the growth in population is faster than the development of resources, this could lead to a decreased capacity in time of crisis: more people needing services but fewer services per capita.

Overall Strengths

Otero County is a rural county with largely traditional values. The community is known for helping in times of crisis. Whether it is an individual with cancer needing treatment, an entire community devastated by fire, or the deployment of military personnel to a war zone; this community comes together to provide physical and emotional support.

The county and city leaders have in recent years concentrated much effort on economic development and city improvement. The City of Alamogordo is working on creating miles of walking and biking paths throughout the city. This is in an effort to help improve, not only the aesthetics of Alamogordo, but also to encourage increased walking thus improving public health overall (increased exercise, decreased in air pollution). The Alamogordo Chamber of Commerce and the Otero County Economic Development Council have been very active in recent years, working together on recruiting new businesses to the area, with some substantial success. In the last

several years, new restaurants, home improvement centers, and regional call centers have been recruited to Otero County. These groups are working on many more.

There is also an active effort by many to bring the X Prize (development of commercial space flight) to Otero County. It is taking place in this area next year, but the goal is for the administrative offices to be located in Alamogordo. This would indeed bring much national and international attention to our area.

There seems also (from key informants) to be an increasing sense of community pride. Alamogordo, this year was named to the list of 30 top “All America Cities” by the National Civic League. The team that formed during this process has decided to continue it’s efforts in order to help bring the community together and engage its citizens more in the future.

Areas where we could be better coordinated

1. There are not many facilities that have a plan in place to respond on the psychosocial aspects of a crisis or disaster. The only plans that exist are through the Local Emergency Planning Committee (LEPC) and the hospital. Most facilities do have general evacuation plans but not a plan for what should be done in the event a public health emergency.
2. In completing this document, it was clear that there was some difficulty in collecting specific information from some sources.
3. There is a lack of mental health and some specialized medical services over all and in case of a crisis, many may not get the services they need. Even without a crisis, many are referred out of town for services.
4. Many of the community agencies and companies have not connected with the LEPC on their emergency plans.
5. As far as emergency planning, the community in general needs to work better together in gathering all the emergency plans and having them in two to three locations with appropriate access.

PART FOUR: Emergency Response and Recovery Planning

Part Four of this profile describes the status of planning for responding to and recovering from a health emergency in our community.

The understanding in the community about potential hazards and vulnerabilities is:

Overall, Otero County has only a few potential hazards and vulnerabilities within the community, and most of them are minor. We have 3 military installations in Otero County: Holloman Air Force Base, as well as portions of White Sands Missile Range and Ft. Bliss (both of which also lie in Dona Ana County and Texas respectively). With these important installations (including the high security aircraft and missile development programs), Otero County may be at risk for increased terrorist action. It was recently

announced via the Base Realignment and Closure process and Ft. Bliss will gain over 10,000 personnel. This could also be an indication of increased military activity in the area.

Some potential environmental hazards are in the air, soil, or water caused by facilities that produce and release air pollutants, toxicants, waste and water. Thunderstorms and heavy rains contribute to potential weather hazards causing concern for forest fires and flooding in the arroyos. There are also occasional extreme wind conditions that can cause property damage. Our communities are aware of these types of hazards as some can occur, to varying degrees, fairly frequently.

The community may be less aware of other potential hazards that are, though less likely, possible. Our community resisted for some time the development of a truck relief route due to fears of a negative effect on the businesses located along the main street through Alamogordo. However, one aspect that the community leaders were looking at was the possibility of a hazardous spill occurring in the center of town. The relief route, which was completed, will help to alleviate some of this concern. There is also concern in some parts of the county regarding the development of oil fields on the Otero Mesa. It is believed that this could lead to contamination of the water supply. These, and other similar topics, are a source of great community debate.

The understanding in the community about vulnerable people and populations is:

Predominately the most vulnerable people in Otero County in the event of a public health emergency are the visually impaired, children, people in the senior population receiving home care assistance, our non-English speaking population, homeless, those with physical disabilities and people with chronic mental illnesses. These populations may have difficulty getting needed information during an emergency, or being able to access services as needed. Though some of these groups have well organized support systems (seniors, those with disabilities) not all who are identified with the population access the support services, so they may not be included in an organized effort during a crisis. Therefore, others (neighbors, family, friends) may need to be identified in order to assist them.

The county emergency response plan includes:

A written county plan for Otero County does exist however it is classified so the location and what is exactly in the plan is unavailable to the general public. It is known that the plan does contain a medical and psychosocial response component. With the inception of the Homeland Security and related issues, the classified nature of community emergency plans is understandable.

Plans for an Emergency Operations Center are:

Otero County is fortunate in that it has an Emergency Operations Center already in place. However, the location is classified as well as the components of where it would be set up if the current location was destroyed during a disaster. The location and operation of this EOC is still under discussion in the Local Emergency Planning Committee.

Other emergency response plans include:

Gerald Champion Regional Medical Center is the only place in Otero County that has a public health emergency response plan. Most of the law enforcement facilities have an emergency plan of some sort. Most of the facilities have general emergency plans but they do not contain a psychosocial response component.

The extent to which these plans are coordinated is:

The plans appear to be coordinated through the Local Emergency Planning Committee, the city manager, the county emergency manager and the chiefs of police in Alamogordo, Tularosa, Cloudcroft, and Mescalero.

Name/Title	Agency	Address	Phone/Pager	Email	Notes
Lee Ann Loney- Coordinator	Otero County Community Health Council (OCCHC)	700 E. First Street, Suite 720 Alamogordo, NM 88310	(505) 443-8100 wk	oteromch@netmdc.com or oterochc@tularosa.net	
Michael Murphy-President	Disability Resource Center	700 E. First Street, Suite 772 Alamogordo, NM 88310	(505) 439-1112 wk	mikecil@tularosa.net	
Mark Gentry- Vice President	Cottonwood Christian Fellowship Church/ Cottonwood Prevention Services	7035 Hwy 54/70 North Alamogordo, NM 88310	(505) 437-2701 wk	mgentry78@hotmail.com	
Sue Medina-Secretary	Alamogordo Public School Board of Education	37 Stonewood Dr. Alamogordo, NM 88310	(505) 434-3580 wk	susan_medina@charter.net	
Sharon Hodges- Advisor	NM Dept. of Health/Health Promotions	1207 8 th Street Alamogordo, NM 88310	(505) 439-1367 ext 126	sharon.hodges@state.nm.us	
Jake Meyer- Fiscal Agent	Executive Director Children In Need of Services (CHINS)	501 24 th Street Alamogordo, NM 88330	(505) 434-3011 wk	chins@charter.net	

* Other Council Members: The OCCHC has over 85 participating members and 25 voting and ex officio members.

PART FIVE: Directory of Health Emergency Management Contacts

Community Health Council Contacts

Emergency Management Contacts

Contact	Name/Title	Agency	Address	Phone/Pager	Email	N
County Emergency Manager	Gus Marker, Otero County Emergency Preparedness Coordinator	Otero County Emergency Services	1000 New York Ave. Alamogordo, NM 88310	439-2612 or cell 491-5942	gmarker@co.otero.nm.us	Us Ba alt
Tribal Emergency Manager	Curtis Williams- Tribal Team Leader	Mescalero Fire Department	PO Box 70 Mescalero, NM 88340	(505) 464-3473	apachebonfire@matisp.net	
LEPC Member	Joe Bailey-President	Alamogordo Dept. of Public Safety (DPS)	619 Texas Ave Alamogordo, NM 88310	439-4119 x11	jbailey@ci.alamogordo.nm.us	
LEPC Member	Wayne Glidden-Vice President	OCFFA/Otero Co.	33 JJ Henry Rd. La Luz, NM 88337	437-5445	gliddenw@charter.net	
LEPC Member	Mike Riley- Alamogordo Emergency Manager	DPS	700 Virginia Ave Alamogordo, NM 88310	439-0747 or 439-4119 ex12 lm	mriley@ci.alamogordo.nm.us	
LEPC Member	Wade King-Treasurer	WSMR EOC	BLD 384 White Sands Missile Range	No phone	King1@wsmr.army.mil	
LEPC Member	Jim O’Leary- District Emergency Co-Cordinator for Amateur Radio	N7DRB- HAM Radio	P.O. Box 73 Alamogordo, NM 88311-0073	(505)443-0776	n7drb@totacc.com	Yes
LEPC Member	Mark Giuliano	Holloman Fire & Emergency	1081 Fifth St. Holloman AFB 88330	572-7195	mark.giuliano@holloman.af.mil	

		Emergency	Holloman AFB 88330		loman.af.mil
Public Health Emerg. Prep'ness	Linda Weiman	Otero County Health Office	1207 8th St Alamogordo, NM 88310	(505)437-9340 x 113	linda.weiman@state.nm.us

Emergency Management Contacts (cont.)

Contact	Name/Title	Agency	Address	Phone/Pager	Email	Notes
Hospital Emerg. Manager	Kenneth Gipson-Safety Manager	Gerald Champion Regional Medical Center (GRCMC)	2669 N. Scenic Dr. Alamogordo, NM 88310	(505)443-7549 (505)443-2149	kgipson@gcrmc.org	Yes plan
Hospital Emerg. Manager	John Houston- Trauma Coordinator	GCRMC	2669 N. Scenic Dr. Alamogordo, NM 88310	(505) 443-7934 (505) 443-2118	jhouston@gcrmc.org	Use ER # 443-7900
Hospital Emerg. Manager	Mathew Anderson- CEO or Tom Raffaele- Safety Manager	Mescalero Indian Hospital	P.O. Box 210 Mescalero NM 88340	(505)464-3801	manderson@abq.ihs.gov	Yes Plan
School Safety Officer	Adrian Guerrero- Alamogordo Public School District Safety Specialist	Alamogordo Public Schools	1211 Hawaii Ave. Alamogordo, NM 88310	(505) 439-3270 ext 104 cell 491- 7233	aguero@aps4kids.org	
Red Cross	Linda Vigil	American Red Cross	700 E. 1st Street Alamogordo, NM 88310	(505)437-4421	oteroarc@netmedc.com	
CERT Program (if any)	Dawn Shainin		137 Cottonwood Canyon Rd. La Luz, NM 88337	(505)443-1531	chaplainbjerk@yahoo.com	
Other health volunteer group	There are 120 volunteer health groups	In Alamogordo and surrounding areas	Refer to http://www.alamogordo.com/profile/clubs.html for complete contact information			

EMS	Cliff Halls- Operations Manager	American Medical Response	1650 N. White Sands Blvd. Alamogordo, NM 88310	(505)437-9100	cliff_halls@mr-ems.com	Has a plan
Law Enforcement	Sam Trujillo- Alamogordo Police Chief	Alamogordo DPS	700 Virginia Ave Alamogordo, NM 88310	(505)439-4300	No email	Has a plan
Law Enforcement	Frank Sacman- Tularosa Police Chief	Tularosa DPS	609 St. Francis Dr Suite B Tularosa, NM 88352	(505)585-2704	No email	Has a plan
Law Enforcement	Gene Green- Cloudcroft Police Chief	Cloudcroft DPS	3208 N. White Sands Alamogordo, NM 88310	(505)682-2101	No email	Operates out of Sheriffs office-Alamo
Law Enforcement	William Mitchell- Police Chief for BIA	Mescalero Law Enforcement	P.O. Box 189 Mescalero, NM 88340	(505)464-4451 or (505) 464-4479	No email	Or Lt. Zachariah Diaz
Law Enforcement	John Blansett	Otero County Sheriff	3208 N. White Sands Alamogordo, NM 88310	(505)437-2210	No email	Has a plan
Law Enforcement	Corey Gossett-Cpt.	NM State Police	411 10th St. Alamogordo NM 88310	(505)437-1313	cgosset@dps.state.nm.us	Has a plan
Law Enforcement	Lt. Randy Heusser- Operations Officer	Holloman Security Forces	49 SFS 750 1st St. Holloman AFB, NM 88330-8032	(505)572 7254	randall.heusser@holloman.af.mil	Or alt. on duty officer
Fire Department	Joe Bailey-Fire Services Commander	Alamogordo Dept. of Public Safety (DPS)	700 Virginia Ave. Alamogordo, NM 88310	(505) 439-4119 opt 3 or ext. 11	jbailey@ci.alamogordo.nm.us	Yes
Fire Department	Robert Chavez- Fire Chief	Tularosa Fire Department	705 St. Francis Dr. Tularosa, NM 88352	(505)585-2704	rchavez@tularosa.net	Emerg. Plan
Fire Department	Erich Wuersching-Fire Chief	Cloudcroft Fire Department	PO Box 317 Cloudcroft, NM 88317	682-3490 wk 682-3375 hm	shiverpinesrv@totacc.com	Yes

Fire Department	Curtis Williams-Tribal Emergency Management Team Leader	Mescalero Fire Department	PO Box 70 Mescalero, NM 88340	(505) 464-3473	apachebonfire@matisp.net	Yes Plan
Fire Department	Gary Atwell- Chief	Alamo West Fire/Rescue	23 El Paso Alamogordo, NM 88310	(505) 572-5074	gary.atwell@holloman.af.mil	Plan in place
Fire Department	Mark Giuliano- Fire Chief	Holloman Fire and Emergency Services	1081 5th St. Alamogordo, NM 88310	(505)572-7195	mark.giuliano@holloman.af.mil	Plan in place
Search & Rescue	Leroy Lewis-Director	Alamogordo Search/ Rescue	No address provided	(505) 437-1313 430-2987	No email provided use cell phone	will provide services upon police request
Search & Rescue	Matt Corp- Director	Sacramento Search/ Rescue	P.O. Box 444 Cloudcroft, NM 88317	(505)430-3365	corpmmattew@hotmail.com	Will provide services upon police request
CISM	Diane Dorsey- CISM Coordinator	CISM	No physical address provided	(505) 827-1929	Dorsey.Diane@state.nm.us	unknown

Health Care Provider Contacts

Contact	Name/Title	Agency	Address	Phone/Pager	Email	Notes
Hospital	Carl Mantey-CEO	GCRMC	2669 N. Scenic Alamogordo, NM 88310	(505) 439-6100 (505) 443-7845	No email	Or on duty administrator
Hospital	Mathew Anderson- CEO	Mescalero Indian Hospital	P.O. Box 210 Mescalero, NM 88340	(505)464-3801	manderson@abq.ihs.gov	Yes Plan

Public Health Office	Linda Weiman – Nurse Manager	Otero County Public Health Office	1207 8th St. Alamogordo, NM 88310	437-9340 437-9899 437-9093	linda.weiman@state.nm.us	Office emergency protocols
Primary/Ambul. Care Clinic	Cindy Curry-Safety Officer or Andrea Ocasio	Ben Archer Health Center	1501 E. 10th St. Alamogordo, NM 88310	443-8133	Cindycurry880@msn.com or aocasio@bahc.nm.org	Yes plan
Primary/Ambul. Care Clinic	Leoma Baca-Director	Mescalero Wellness Center	476 Mescal Loop Mescalero, NM 88340	(505) 464-6383	rezhlth@matisp.net	Yes plan
Primary/Ambul. Care Clinic	Julie Baker-Administrator	Sacramento Mountain Medical Center (Presbyterian Medical Services)	102 HWY 82 Cloudcroft, NM 88317	(505)682-2542	No email	Yes Plan
Primary/Ambul. Care Clinic	Julie Baker-Administrator	Tularosa Clinic (Presbyterian Medical Services)	111 Center Ave Tularosa, NM 88352	(505) 585-1250	No email	Yes Plan
Primary/Ambul. Care Clinic	Stella Avila- Office Manager	Alamogordo Clinic Immediate Care Cntr.	1410 Aspen Alamogordo, NM 88310	(505) 434-5571	No email	No plan
Other (e.g. Long Term, Home Health, etc.)	Rich Cartney-Administrator	Betty Dare Good Samaritan Center	3101 N. Florida Alamogordo, NM 88310	(505)434-0033	rcartney@good-sam.com	Has plan
Other (e.g. Long Term, Home Health etc.)	Sally Manning- Director of Nursing	Casa Arena Blanca	205 Moonglow Alamogordo, NM 88310	(505) 434-4510	No email	Unknown

Other (e.g. Long Term, Home Health, etc.)	Beverly Evens- Executive Director	Aristocrat Assisted Living Community	252 Robert Bradley Alamogordo, NM 88310	(505) 437-3002	No email	Has plan
Other (e.g. Long Term, Home Health, etc.)	Frances Walker- Administrator	La Francoise	1504 Roosevelt Av. Alamogordo, NM 88310	(505) 437-4302	No email	Has evac.plan
Home Health	Brenda O’Conner- Administrator	Access Home Health Care	1600 Indian Wells Alamogordo, NM 88310	(505)434-6222 (505)439-7228 cell	No email	No plan
Home Health	Pat Raub- Administrator	Alamogordo Home Care/Hospice	505 11 Street Alamogordo, NM 88310	437-3500	ahc@wayfarer1.com	Patient emerg. plan
Home Health	Karen Huffman	Coordinated Care Corp	920 E. 10th St. Alamogordo, NM 88310	434-5744	No email	No Plan – reach her 8-5
Home Health	Gwen McCourt- Manager	Mountain Shadows Home Care Services	252 Robert Bradley Dr Alamogordo, NM 88310	437-3794	Mtshadows2@hotmail.com	No Plan
Other: Respite care for Dev. Challenged	Meron Wilson- Director	Opportunity Center	873 Wright Alamogordo, NM 88310	(505) 437-0919	meronave@tularosa.net	No Plan
Behavioral Health Provider	Jim Kerlin-Director	The Counseling Center	1900 E. 10th Street Alamogordo, NM 88310	(505) 437-7404	jkerlin@charter.net	No plan
Behavioral Health Provider	Lance Spear- Owner	The Safety Institute	1518 Indian Wells Alamogordo, NM 88310	434-4356	No email	No plan
Behavioral Health Provider	Santiago Rodriquez- Director	Otero County Council on Alcohol Abuse and Alcoholism	P.O. Box 1561 Alamogordo, NM 88310	437-8942	Santiagor_2@charter.net	No Plan
Behavioral Health Provider	Vicki Thomas PhD.- Owner or Liz Logan- Office Manager	Alamogordo Mental Health Services	1208 N. York Ave. Alamogordo, NM 88310	437-8865	alamogordomental@tularosa.net	No Plan use

	Office Manager				@tularosa.net	
Behavioral Health Provider	No contact provided	Alcohol, Drug, and Mental Health Counseling Services	No physical address provided	1(800)996-3784	No email	unknown
Behavioral Health Provider	Sheryl (Candy) Schoeneberg- Counselor	Bethel Baptist Counseling	1316 Scenic Dr. Alamogordo, NM 88310	437-7311	candy@bethelnm.org	unknown
Behavior Health Provider	Sylvia King- Director	Community Addiction Treatment Services (CATS) and James House	303 B Canal Alamogordo, NM88310	434-2016	tuliegal@tularosa.net	No Plan
Behavioral Health Provider	Jake Meyer- Director	Children In Need of Services (CHINS)	501 24th Street Alamogordo, NM 88310	434-3011	Chins@charter.net	
Behavioral Health Provider	Eileen Macmillan	National Alliance for the Mentally Ill (NAMI)-Otero	1318 Desert Eve Alamogordo, NM 88310	442-1028	emacmillan@tularosa.net	
Behavioral Health Provider	Donna Mohr- Independent Counselors	Independent Counselors Offices	PO Box 406 Alamogordo, NM 88310	(505)439-8288	No email	No Plan please send copy of profile
Behavioral Health Provider	Marc A. Caplan PhD, PA, Assoc.	Independent Counselor	916 N. White Sands Rd. Alamogordo, NM 88310	(505)434-5512	No email	No plan
Behavior Health Provider	Robin Bailey- Office Manager	White Sands Mental Health	1402 Indian Wells Rd. Alamogordo, NM 88310	(505)434-9764	Robinbailey675@hotmail.com	Yes Plan
Behavioral Health Provider-other	Carolyn Lee- JPO Chief	Juvenile Probation and Parole Office (JPPO)	211 E. 10th St. Alamogordo, NM 88310	(505) 437-0420	No email	No plan

Behavioral Health Provider-other	James Peck	La Placita	3102 N Florida Alamogordo, NM 88310	(505)434-0515	No email	Yes has a plan
----------------------------------	-------------------	-------------------	--	----------------------	-----------------	-----------------------

Health Care Provider Contacts (cont.)

Contact	Name/Title	Agency	Address	Phone/Pager	Email	Notes
Behavioral Health Provider	Andrea Ocasio- Office Manager	Ben Archer Health Center	1501 E. 10th St. Alamogordo, NM 88310	443-8133	aocasio@bahcnm.org	Yes plan
Behavioral Health Provider	Julie Baker- Administrator	PMS-Presbyterian Medical Services	74 James Canyon Hwy Cloudcroft NM 88317 or 111 Main Street Tularosa NM 88325	682-2542 or 585-1250	No email	Emergency plan
Pharmacy	Debbie Blount-Manager	Wal-Mart Pharmacy	233 S. New York Ave. Alamogordo, NM 88310	(505)434-5345 opt. 0	rphdebbie@yahoo.com	yes
Pharmacy	Thomas Norris-Manager	K-Mart Pharmacy	3201 N. White Sands Alamogordo, NM 88310	434-2744	No email	No plan
Pharmacy	David Flores- Manager	Walgreen's Pharmacy	895 N. White Sands Alamogordo, NM 88310	(505)434-4116 opt. 0	No email	Remote prescription
Pharmacy	Gail Watters- Manager	Lowe's Pharmacy	675 E. 10th Street Alamogordo, NM 88310	(505)434-4130	Rx55@lowesmarket.com	No plan
Pharmacy	Hall Sims- Owner	Medical Arts	1301 E. 10th Street Alamogordo, NM 88310	(505) 437-5530	hall@totacc.com	No plan carries extra Rx

Mortuary	Kent and Lisa House - Owners	Alamogordo Funeral Home	2301 1st Street Alamogordo, NM 88310	434-5253	No email	No plan
Mortuary	Harold O'Dell- Director	Hamilton-O'Dell Funeral Home	1334 N. Scenic Dr. Alamogordo, NM 88310	(505)437-0530	No email	No plan
Other	No contact person	Professional Crematory Services	No address provided	(505)437-3002	No email	No plan
Other	No contact person	Sunset Gardens Direct Depository	No address provided	(505)437-9909	No email	No plan
Other	Yvette Guilez-Manager	Lincare	804 E. 10th Alamogordo, NM 88310	(505)437-6155	No email	No plan
Other	Doug Thomas- Manager	American Home Patient	1001 E. 10th Street Alamogordo, NM 88310	(505)434-3778	No email	No plan
Other	Marie -Manager	Major Medical	700 Fairgrounds Rd Alamogordo, NM 88310	(505)434-0207	No email	No Plan
Other	Naomi - Manager	Wheelchair and Walker Rentals	1701 Indian Wells Alamogordo, NM 88310	(505)434-0207	No email	No plan

Community Contacts

Contact	Name/Title	Agency	Address	Phone/Pager	Email	Notes
Local Gov't: Pub. Utility/Works	Mary Parra- Public Information Coordinator	Texas-New Mexico Power Company	901 N. Florida Alamogordo, NM 88310	437-2423	mparra@tnpe.com	Yes Plan
Local Gov't: Pub. Utility/ Works	Specific information not available.	PNM Gas	1108 Cuba Ave. Alamogordo, NM 88310	950-1997		

Local Gov't: Pub. Utility/Works	Not available	Otero County Electric Cooperative	202 Burro Ave. Cloudcroft, NM 88325	1-800-548- 4660 or 682- 2521		
Local Gov't: Human Services	Rebecca Schuyler-Avila County Director	NM Human Services Dept./ Income Support Division	108 Cottonwood Dr. Alamogordo NM 88310 408 Cuba Avenue (home) Alamogordo, NM 88310	437-9260 437-8258 (hm)	Rebecca.Schuyler-Avila@state.nm.us	
Faith Community	Robert Smith	Minstrel Alliance/ Cottonwood Christian Fellowship	PO Box 1570 Alamogordo, NM 88310	437-2762		No plan
Faith Community	Eileen Brown- Coordinator Outreach	St. Jude Mission	1404 College Ave Alamogordo, NM 88310	437-0238	sjalamo@zianet.com	Help with shelter and some food
Faith Community	Gary Myers, Director	House of Prayer	601 Delaware Ave. Alamogordo, NM 88310	437-7880		Work with homeless
Food Bank	Capt. Ron McKay- Officer in Charge	Salvation Army- Emergency Disaster Services	1900 1st Street Alamogordo, NM 88310	443-0845 (520) 850- 7988	dumfries@zianet.com	Food pantry M-F 10am - 12 pm
Food Bank	Mary McAdams- Secretary	Alamogordo Church of Christ	2826 Indian Wells Rd. Alamogordo, NM 88310	443-0497	alamogordochurch@zianet.com	Food Pantry Wed 1-3pm
Food Bank	No contact person	Wesley United Methodist Church	101 Dale Scott Ave Alamogordo, NM 88310	437-5054	No email	Mon 9-12 food pantry
Food Bank	No contact person	Primera Iglesia Bautista	1711 Ocotillo Dr. Alamogordo, NM 88310	434-8650	No email	Food Pantry Wed. 1-3pm
Food Bank	Patty Johnston- Secretary	First Assembly	801 10th St. (10th and Florida) Alamogordo, NM 88310	437-8922	pjohnston@neworship.org	Food Pantry Mon 9-12pm

Food Bank	No contact person	Tularosa United Methodist Church	1007 Granado Tularosa NM 88352	585-2314	No email	Food Pantry Mon/Wed 10-12
Food Bank	Maria House-Secretary Al Maxi- Minister Loise Lindley-Food Pantry Staff	Church of Christ	1300 Cuba Ave Alamogordo, NM 88310	437-4795	cubacoc@wayfarer1.com	Free Lunch Sat. 11:30-1
Food Bank	Jean Shaffer-Share Table committee chair	Grace United Methodist Church	16 th St and Cuba 1206 Greenwood Ln. Alamogordo, NM 88310	437-7640	No email-updating information	Shared Table Sat. 11:30-1 * no plan
Food Bank	Genie Wade-Volunteer Head of Community Kitchen	St. Johns Episcopal Church	1114 Indiana Ave Alamogordo, NM 88310	437-3891 church 437-2191 hm	felixcorji@aol.com	Community Kitchen Tue/Thur 5-6pm
Food Bank	Veronica Ortega-Director	Alamo Senior Center	2201 Puerto Rico (at Indian Wells) Alamogordo, NM 88310	439-4150 x 18	vortega@ci.alamogordo.nm.us	Lunch M-F 11-1pm for 60 yrs and Older
Food Bank/Shelter	Gary Myers- Director	House of Prayer	601 Delaware Alamogordo, NM 88310	437-7880	Garylmyers88310@aol.com or alamohop@aol.com	B/ Lunch M-F 8:30-9:50, 11:30-12:50 Bkfst only on Sat/Sun * no emerg. plan
Business – Food, Goods, Services	Jay Scholbonm- Store Manager	Wal-mart	233 S. New York Ave Alamogordo, NM 88310	434-5870	No email	Has Plan
Business – Food, Goods, Services	Liz Santamaria – Loss and Prevention Manager	Kmart	3201 White Sands Blvd. Alamogordo, NM 88310	437-5150	No email	Has Plan
Business – Food, Goods, Services	Jim Cotton- Store Manager	Lowes	675 10 th St. Alamogordo, NM 88310	434-1900	m55@lowesmark.com	No plan

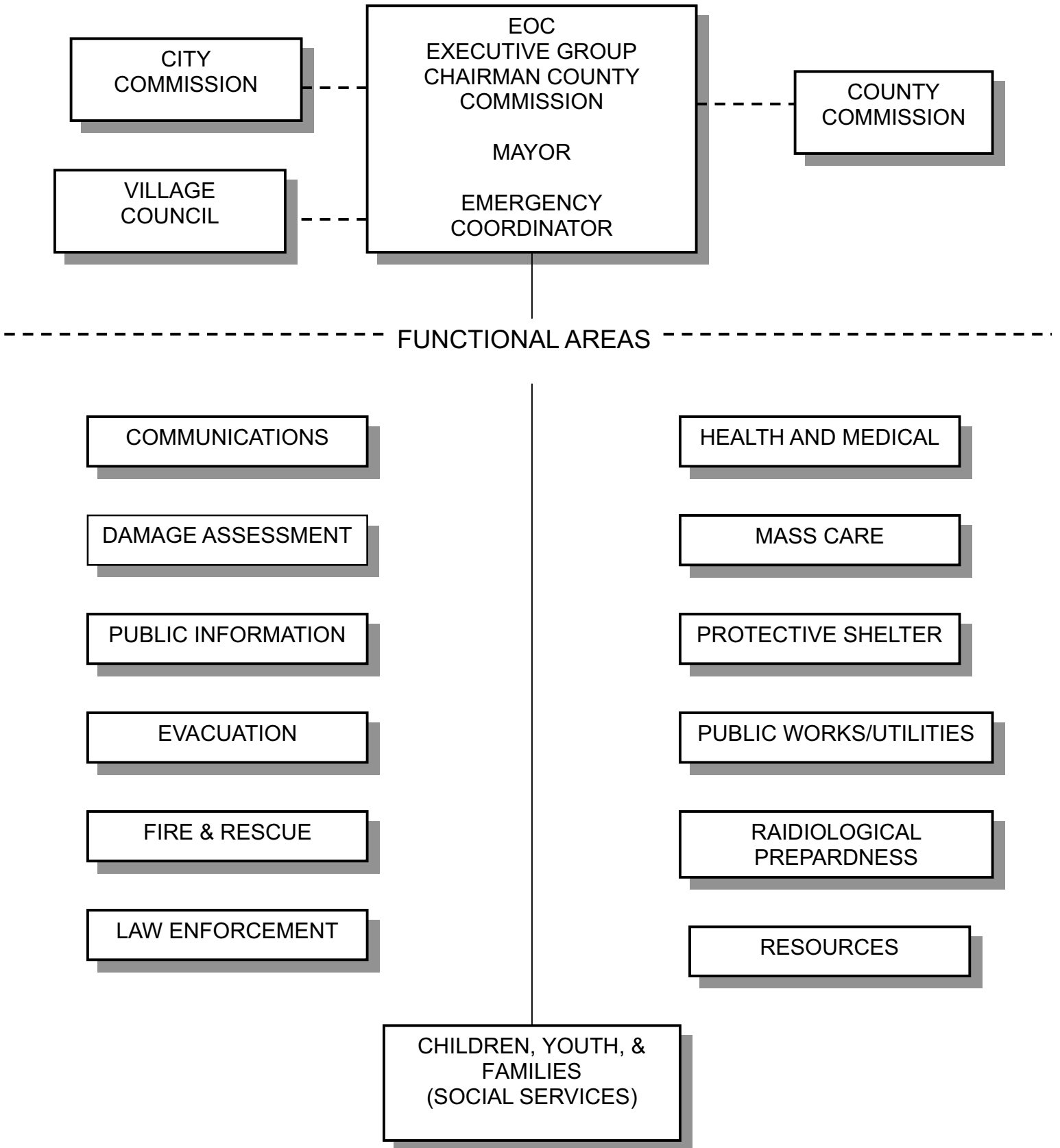
Ham Radio Operator	Jim O’Leary- District Emergecy Co-Cordinator for Amateur Radio	N7DRB- HAM Radio	P.O. Box 73 Alamogordo, NM 88311-0073	(505)443-0776	n7drb@totacc.com	Yes plan
Other	Veronica Ortega	Alamogordo Senior Center	2201 Puerto Rico Ave Alamogordo, NM 88310	439-4150	vortega@ci.alamogordo.nm.us	Evac. plan

Community Contacts (cont.)

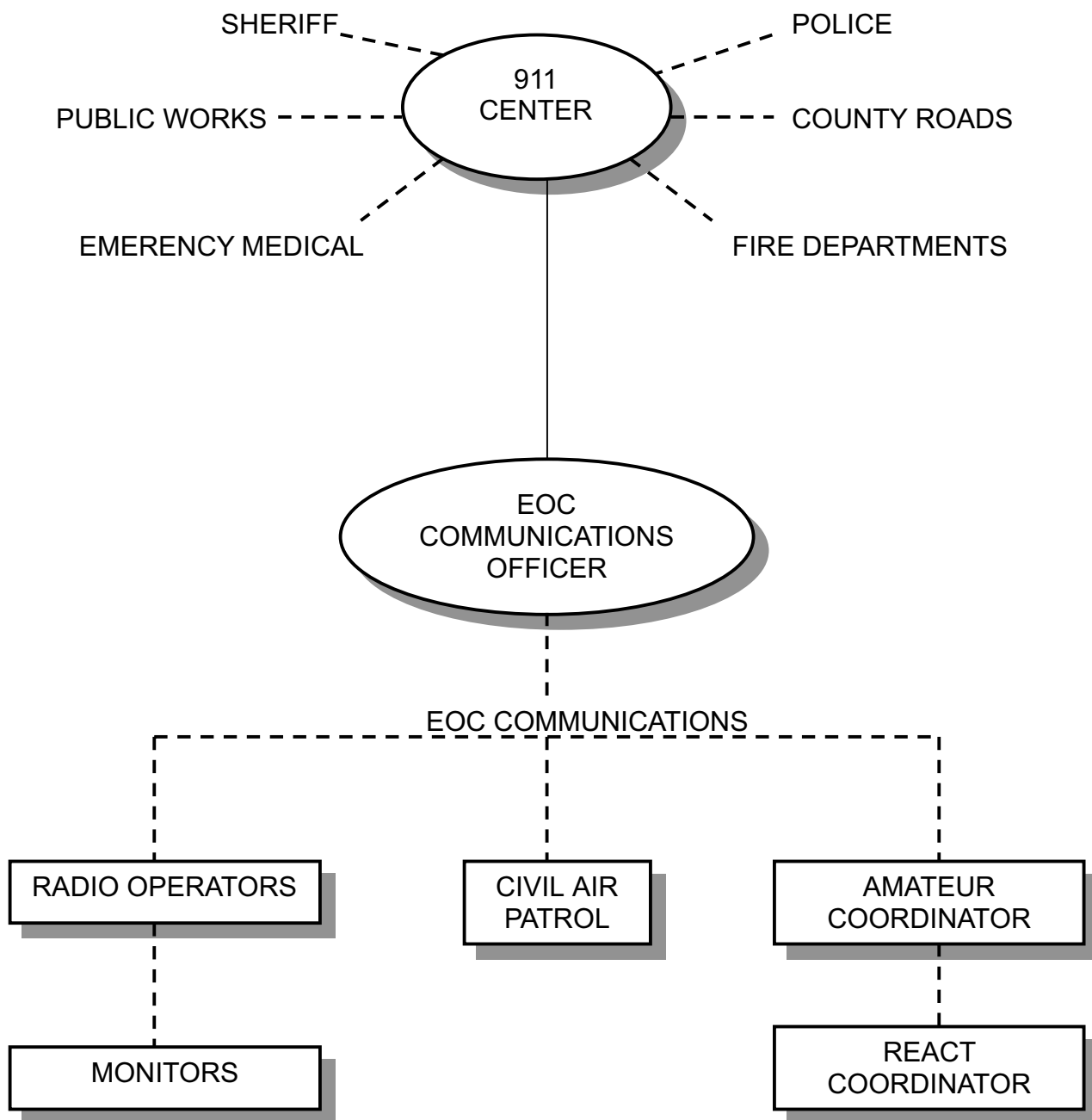
Contact	Name/Title	Agency	Address	Phone/Pager	Email	Notes
Other	Virginia Blansett-Administrator	Otero County Detention Center	1958 Bus Center Blvd. Alamogordo, NM 88310	(505) 434-2519	vblansett@co.otero.nm.us	Yes Plan
Other	Darcy Garcia	SE NM Community Action Corp.	700 1st Street Alamogordo, NM 88310	437-1364	dgsnmcac@zianet.com	Help with utilities, rent, medications, etc.
Other	Dr. Philip Knight	Alamogordo Public Schools	1211 Hawaii Ave. Alamogordo, NM 88310	439-3270	pknight@aps4kids.org	Secondary Contacts: Cloudcroft: School Principals - Amy Lane Elem., Fred Wright, MS, Shirley Crawford, HS
School Superintendents	Brenda Vigil	Tularosa Municipal Schools	504 1st St. Tularosa, NM 88352	585-8800		
	Glena Muncries	Cloudcroft Public Schools	800 James Canyon Hwy Cloudcroft, NM 88317	682-2361		
	Connie Higgs, Director	Community Christian School	2907 Thunder Rd. Alamogordo, NM 88310	434-0352		

	Claire Riker – Principal (Unavailable due to Summer break)	Christian School Father James B. Hay Catholic School Deutsche Schule Alamogordo (German School – for dependants of German Air Force)	Alamogordo, NM 88310 1000 E. 8th St. Alamogordo, NM 88310 3601 N. Scenic Dr. Alamogordo, NM 88310	437-7821 437-8893		Tularosa Ronnie Wright, Maintenance Supervisor
Other	Diane Martin	Children In Need of Services – Child Adult Food Program	501 24th St. Alamogordo, NM 88310	434-9588		Work with home child care providers
Other	Sandra Connolly	Child Care Services Bureau	2200 Indian Wells Rd. Alamogordo NM 88310	439-1730	sandra.connolly@state.nm.us	
Other	Veronica Walker	La Vida Institute	200 Virginia Alamogordo, NM 88310	434-4795	veronica@zianet.com	Provides training for child care providers
Other	Christina Rutland, Deputy Director	NM Developmental Disabilities Planning Council	810 West San Mateo Suite C Santa Fe, NM	(505) 272-8549 800-552-8195	infonet@unm.edu	www.nmddp.com/Pages/
Other	Diana Jennings, Superintendent	New Mexico School for the Blind and Visually Impaired	1900 N. White Sands Blvd. Alamogordo, NM 88310	437-3505		
Other	Dr. Kelly Frost, MA CCC-A	Advanced Hearing Care	1401 10th St. Suite C Alamogordo, NM 88310	437-4327		
Other	Lieutenant Colonel Michael Beck	Senior Operations Officer	950 1st St. HAFB 88330	572-2630	michaelbeck@bundeswehr.org	

**DIRECTION AND CONTROL
ORGANIZATIONAL CHART**

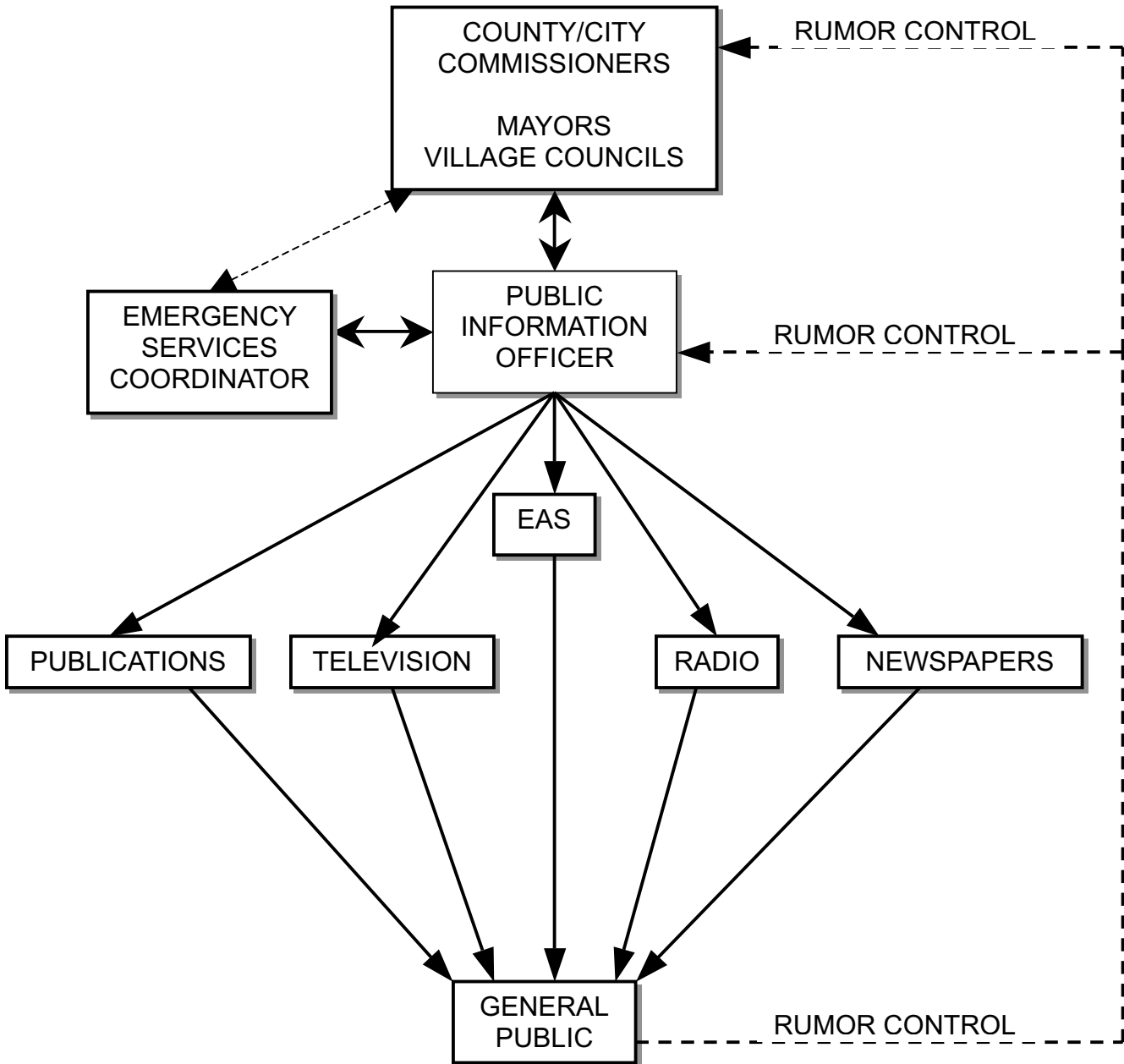


COMMUNIUCATIONS AND WARNING



EMERGENCY

PUBLIC INFORMATION



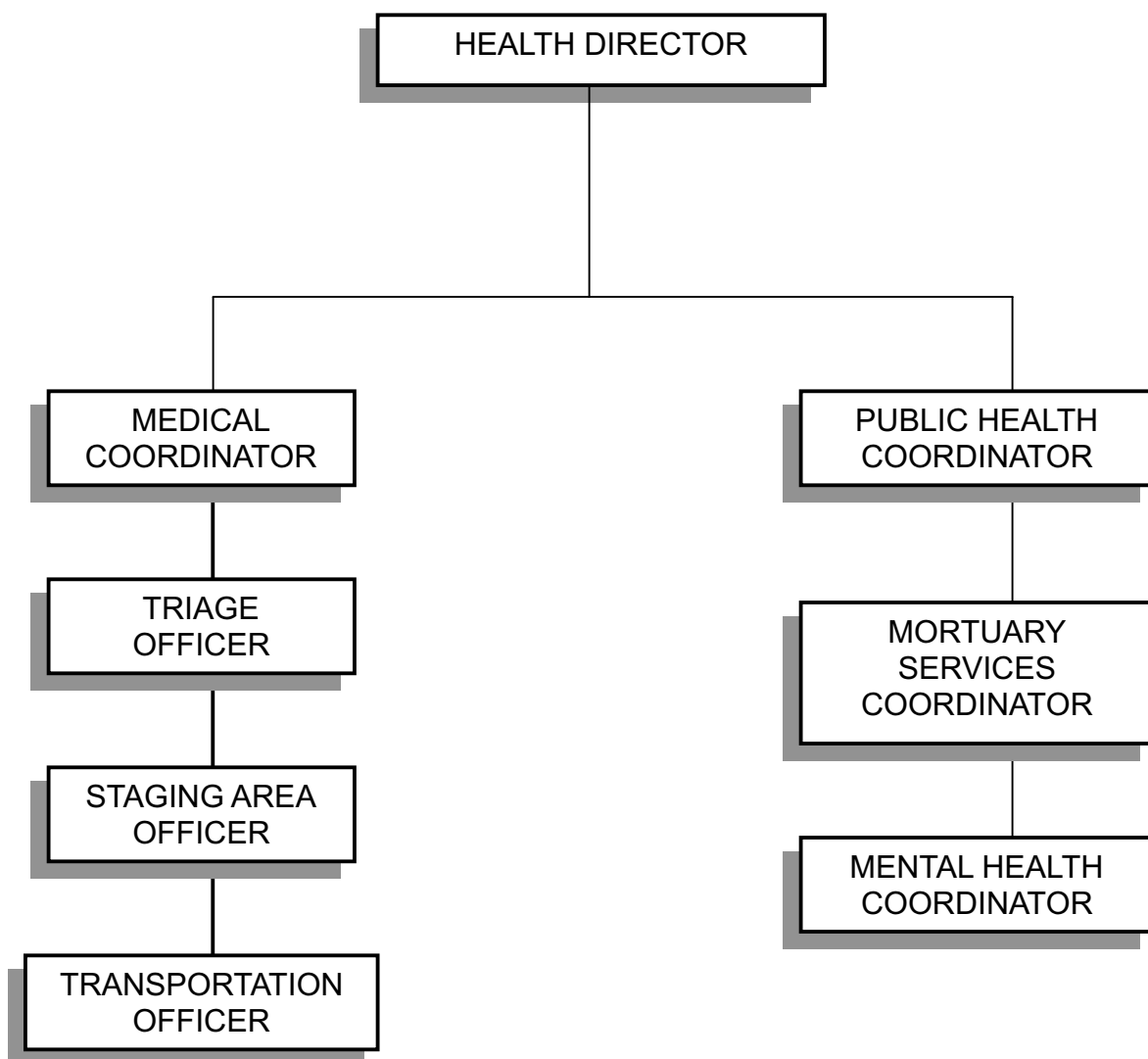
LAW ENFORCEMENT

ALAMOGORDO
DPS

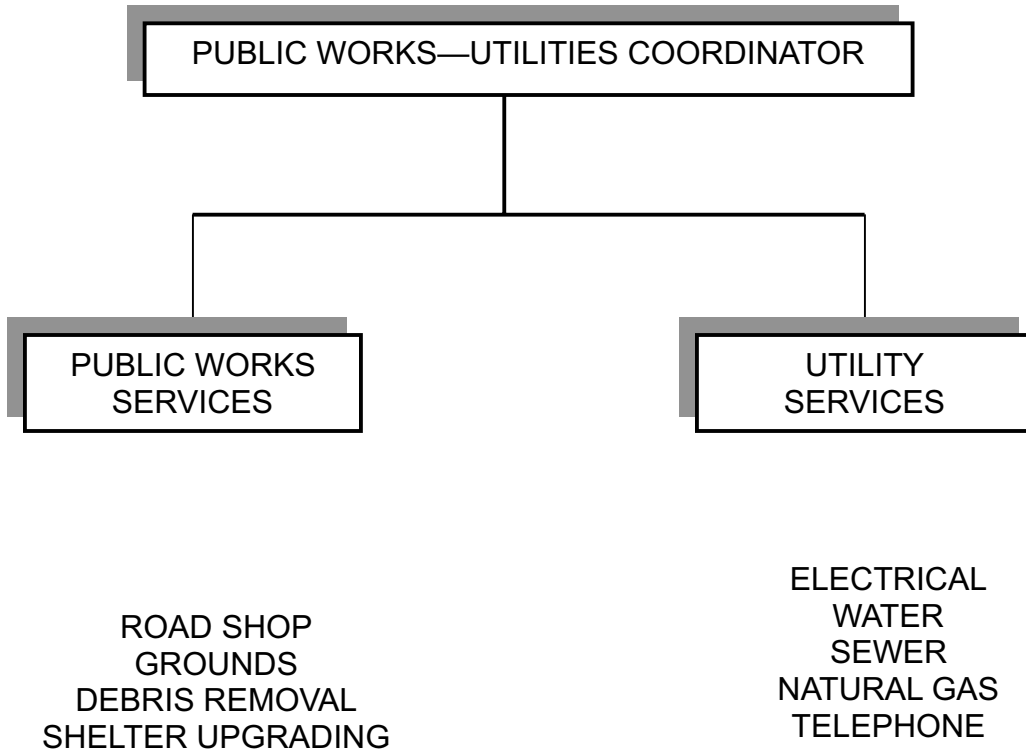
OTERO COUNTY
SHERIFF

TRIBAL/VILLAGE
POLICE

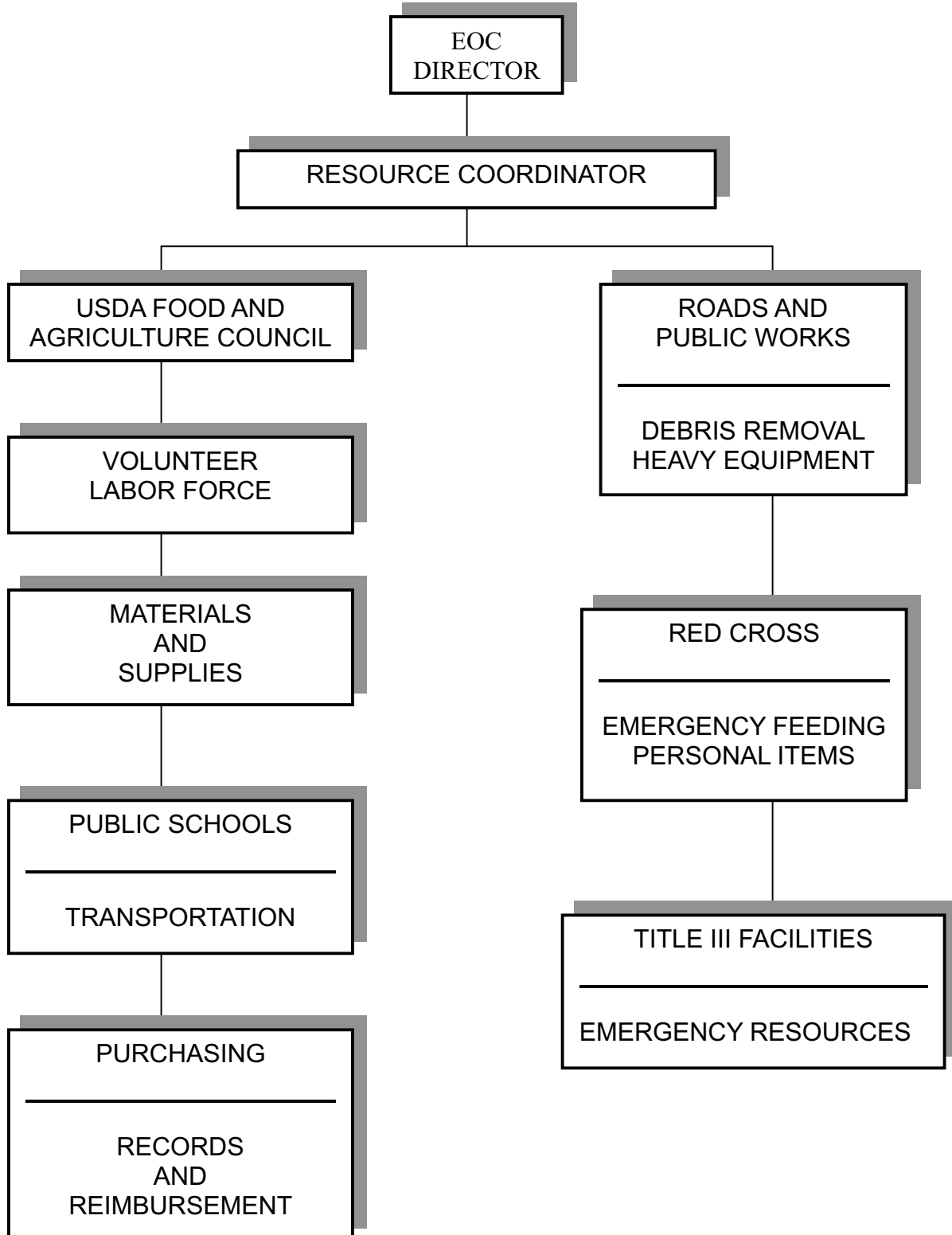
HEALTH AND MEDICAL



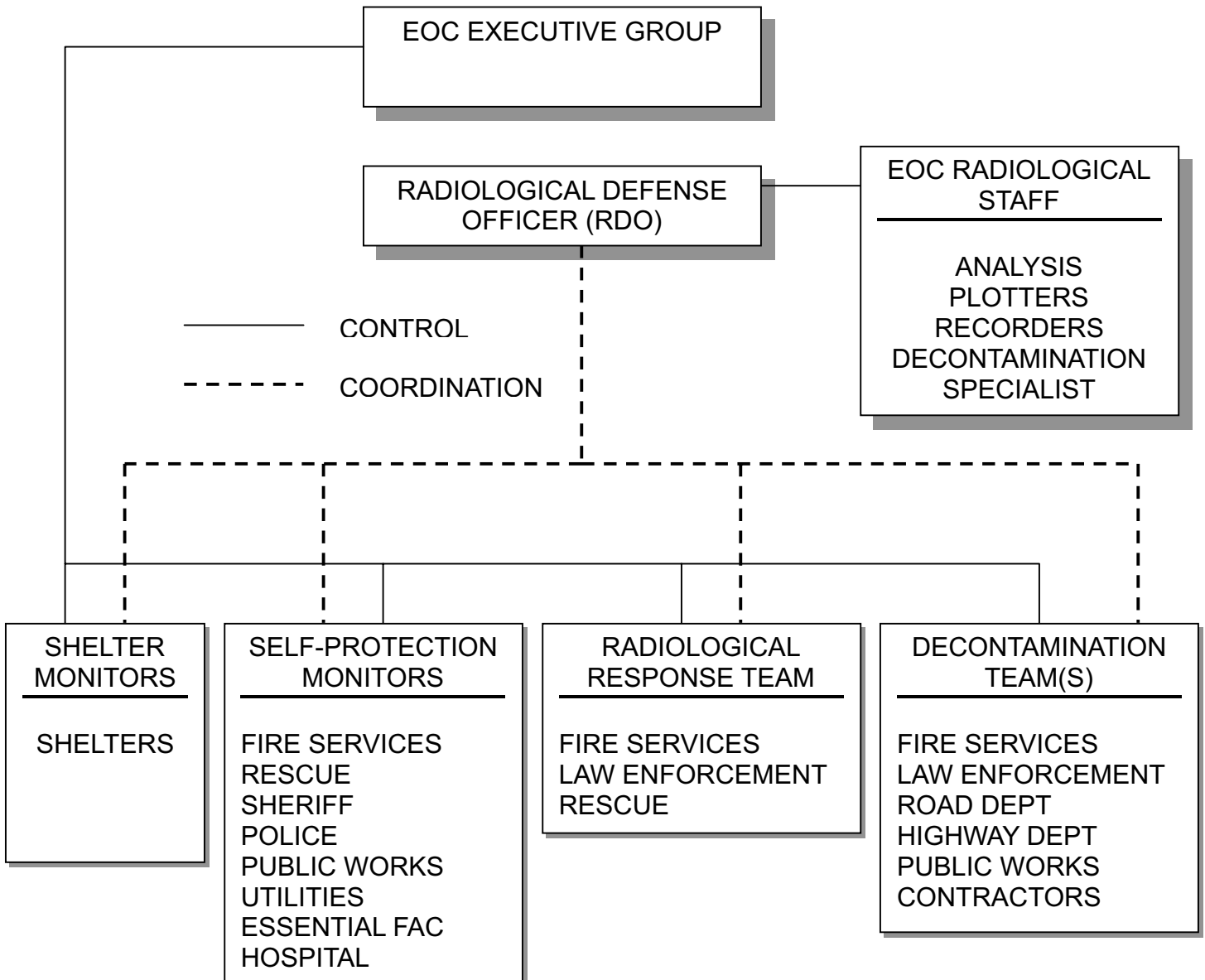
PUBLIC WORKS--UTILITIES



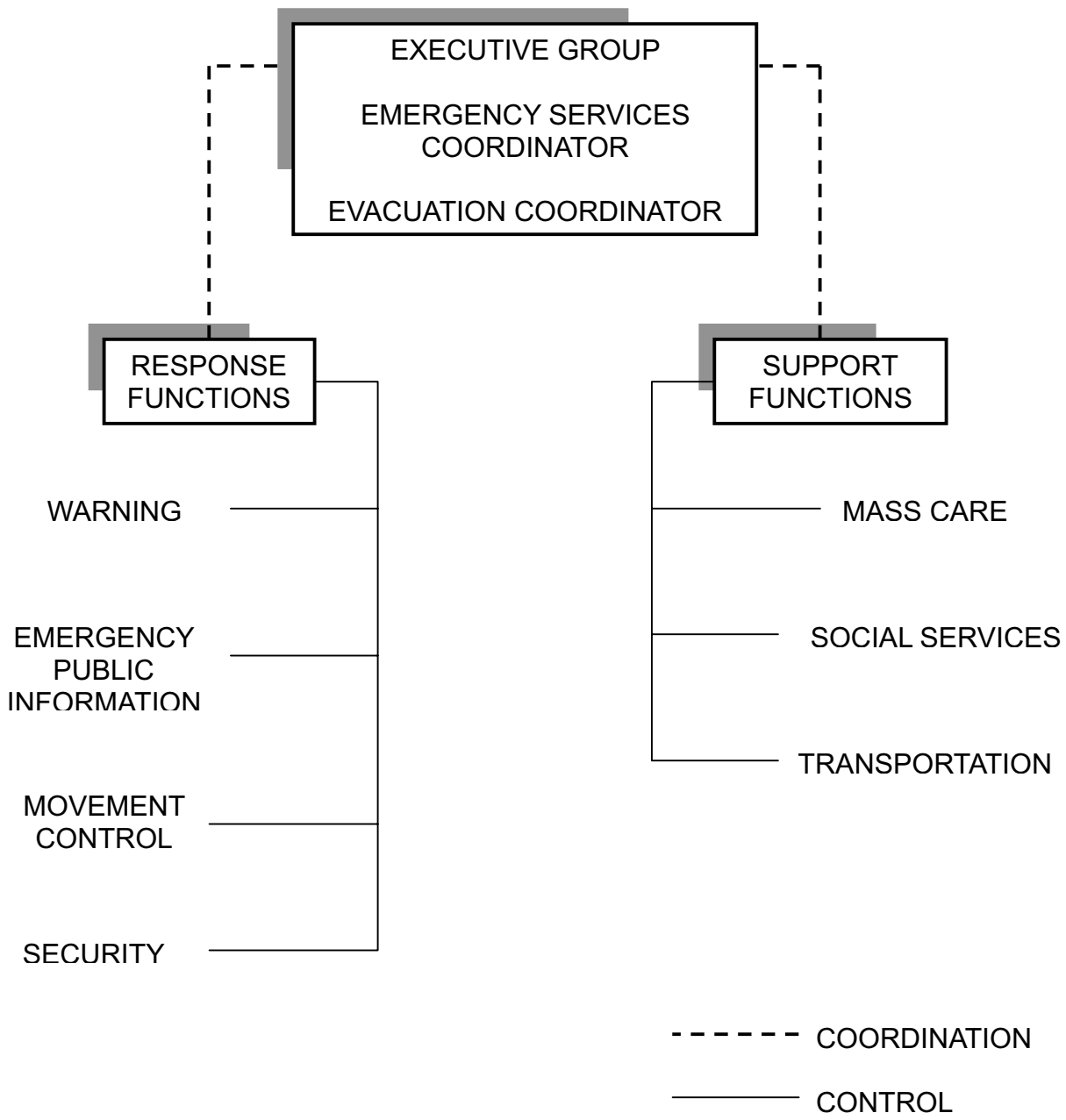
RESOURCE MANAGEMENT



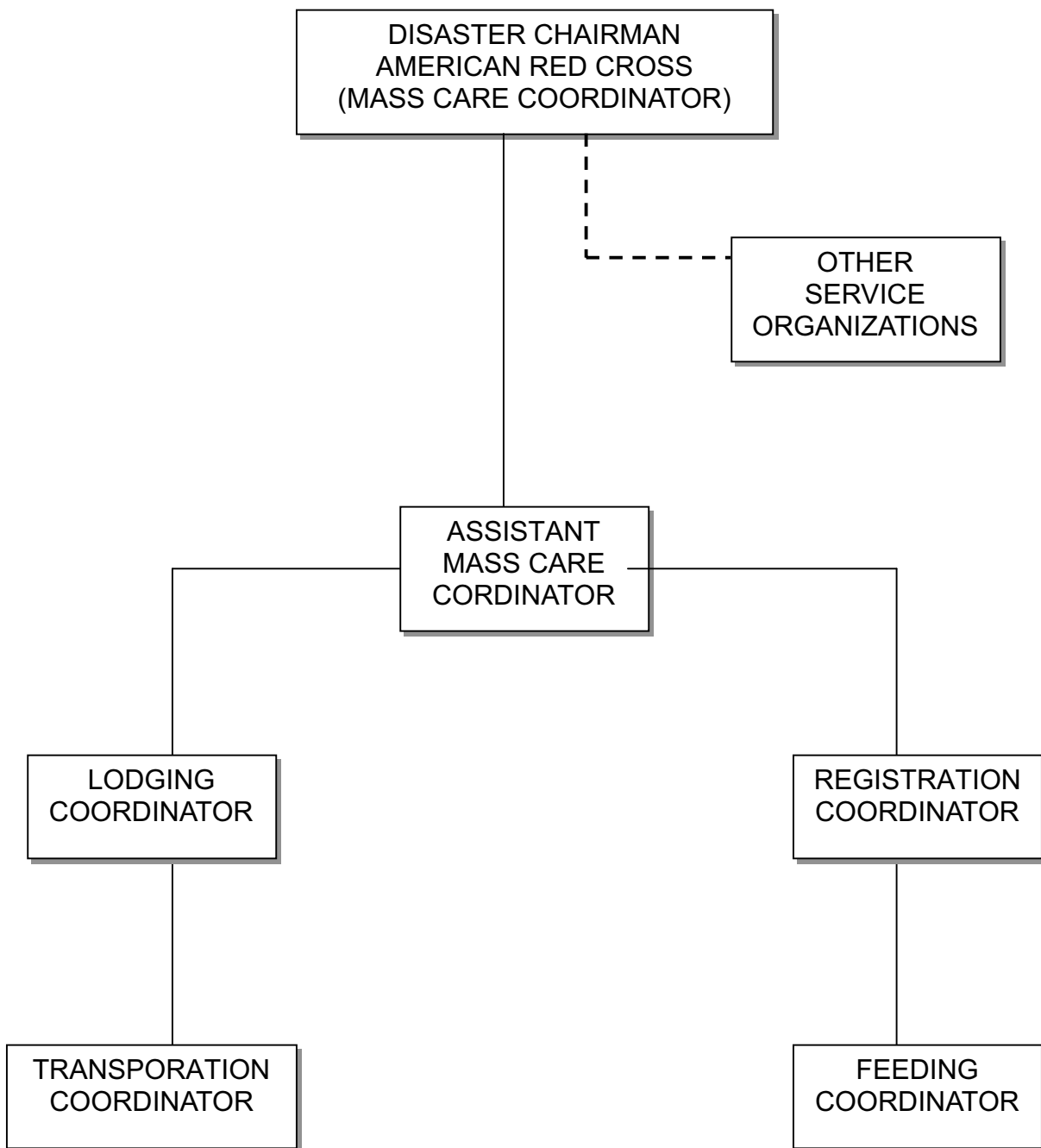
RADIOLOGICAL REPARDNESS



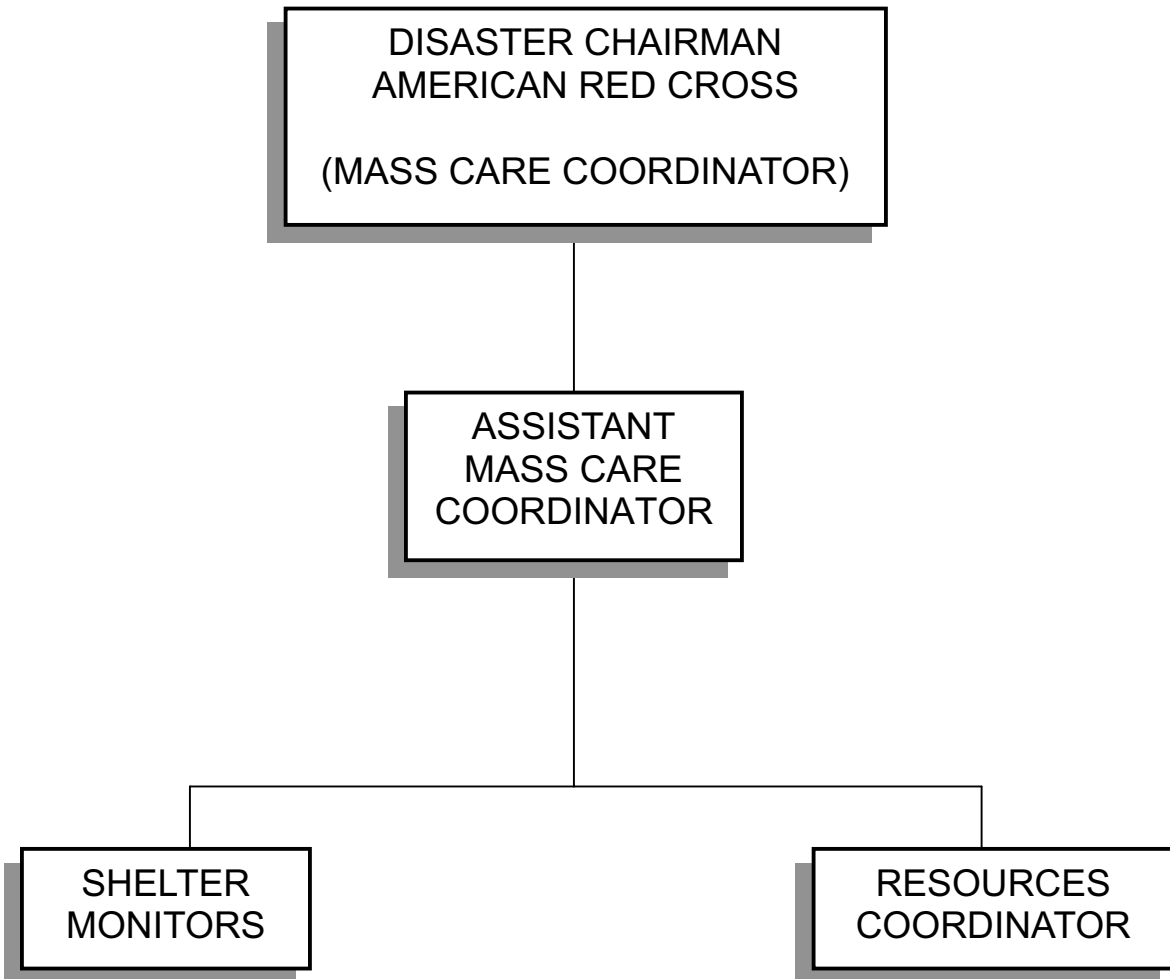
EVACUATION



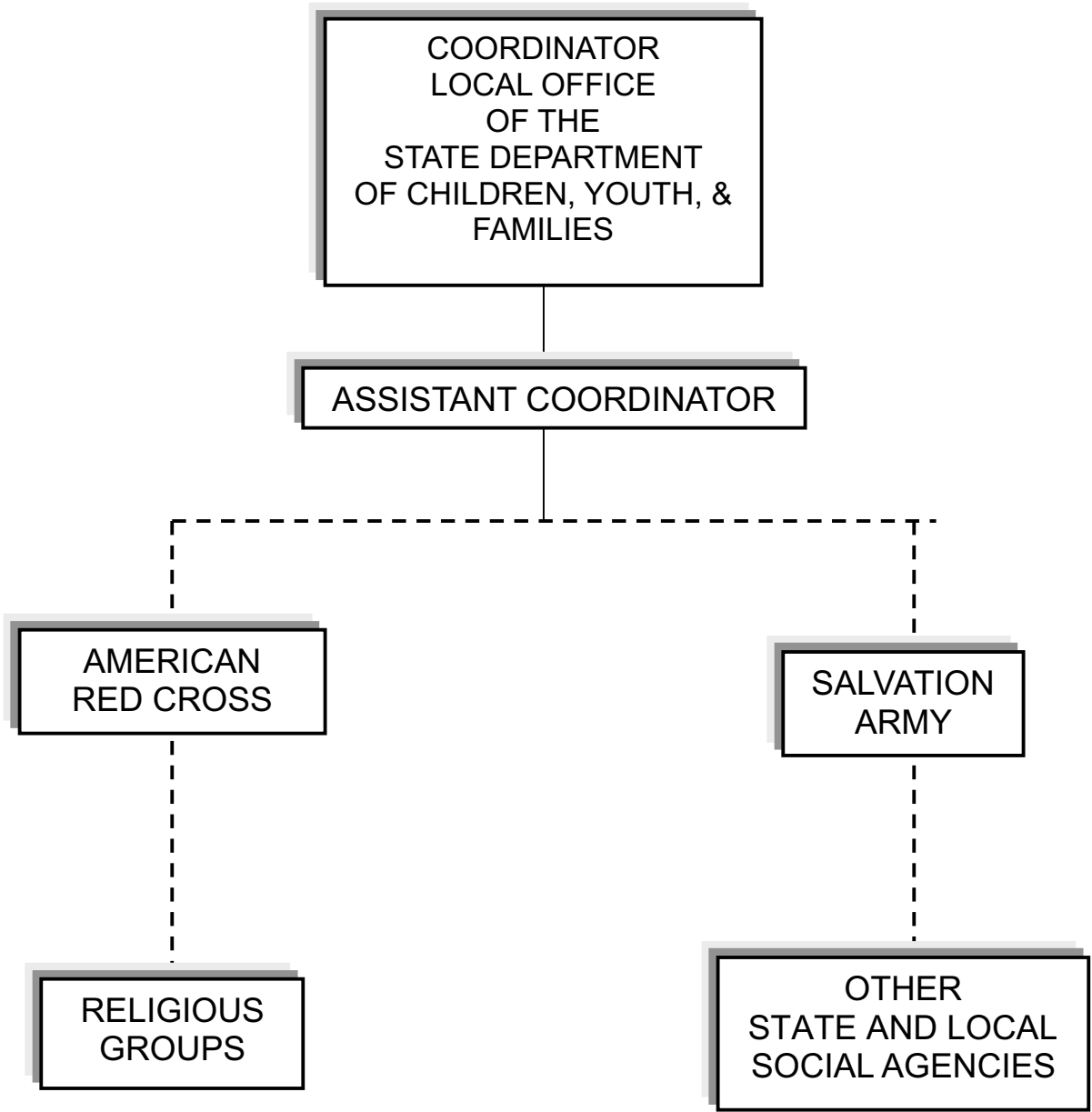
MASS CARE



**IN-PLACE PROTECTIVE
SHELTER**



SOCIAL SERVICES



DAMAGE ASSESSMENT

